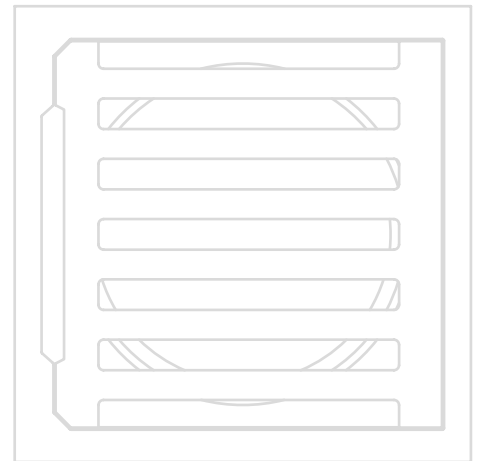
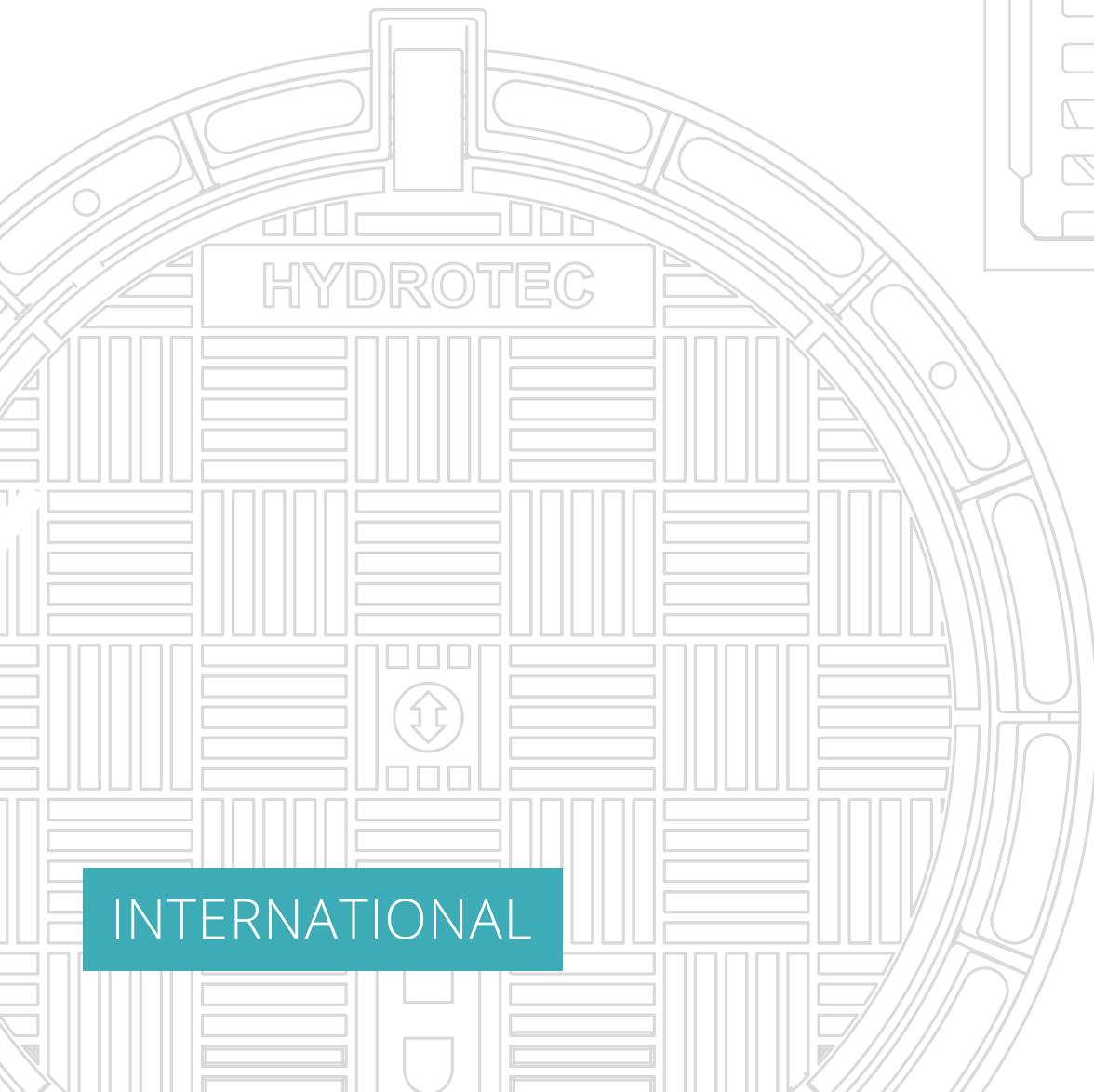


HYDROTEC

MANHOLE COVERS & GULLY TOPS



INTERNATIONAL

06/2022

CONTENT

About HYDROTEC / Production 3
 Certified Quality 6
 HYDROpur® insert 8

MUNICIPAL CASTINGS

	Clear opening							Load class							
	1000	800	700	600	500	400	300	200	A	B	C	D	E		F
Manhole Covers															
<u>Round:</u>															
ECON		•		•									•	•	10
EURO				•					•	•		•			18
SCANDIC		•		•								•			22
TRIX			•	•								•			23
TITONpur		•		•								•			24
<u>Square:</u>															
ECON				•									•		14
Inspection Covers															
Round		•											•		29
Square															30
Pipe covers															
					•	•	•	•				•	•		34
															36
Gully Tops															
ECON															38
Other															42
Kerb Drainage															
													•		36
Home and Yard Drainage															
												•		•	45
Accessories															
															47

All texts, images and layouts of this catalog are protected by copyright. The use of contents of this catalog requires an written approval by the responsible person. We reserve the right of technical changes in the production and constructive development without prior notice. All information about DIN standards, property rights, quality marks, certification marks and trademarks correspond to the current time of printing. All previous catalogs are no longer valid!

ABOUT HYDROTEC



From little to large.

On reflection, we consider this company to be a success story. When starting out nearly 50 years ago not even the company's founder, Gisbert Brinkschulte, could have envisioned that his sole ownership company would grow to be such a strong global player namely HYDROTEC Technologies AG. The company has grown with a comprehensive network of business partners and is taking all necessary steps to continue growing in the future. HYDROTEC products are sold in many different countries and seek to establish ourselves as one of the leading players in each market. To achieve this we adhere to our principles: High quality products at fair market prices.

We like to answer your questions before you ask them.

With our commitment to continually improve our technology and broaden our range of quality products HYDROTEC is expanding its core business which is manufacturing and selling drainage castings / systems. Self-leveling manhole covers, drainage channels, surface boxes, or street furniture are just a few examples of our product portfolio, which is sold all over the world. It is not just a question of business, but of people who understand our business.

Our staff at HYDROTEC strive to find the best possible solution for our customers every day. We have a simple recipe for giving you the information you need: Responsibility. Employees who identify themselves with their jobs are motivated and put 100% into their jobs. This helps us and above all our customers.



THE PRODUCTION



THE PRODUCTION



New products and strategies will be intensified developed in the future with our partner foundry ERKON. Apart from the standard products are more and more multi-purpose products required. This applies not only to the German market but to all of Europe. The technically demanding production will be taken over by the ERKON foundry, making for HYDROTEC a valuable contribution to future development.

ERKON is based on a 35,000 m² site in the industrial area of Konya. For the growth-orientated company the connection to a global player like HYDROTEC is forward-looking. With the participation in the ERKON foundry HYDROTEC wins a partner with whom the targets of market and procurement expansion can be successfully implemented.

- TS ISO EN 14001 / TS ISO EN 9000
- 6t/h capacity INDUCTOTHERM dual truck system furnaces
- Moulding line
 - HWS EFA SD 5,5
1100 x 950 x 300 + 300 mm
 - HWS HSP 4D
1250 x 1000 x 300 + 300 mm

INSTALLATION SECTION

EN 124



Class A 15
Test load 15 kN
Walkways, cycling paths, green areas



Class B 125
Test load 125 kN
Walkways, pedestrian zones, car parking areas



Class C 250
Test load 250 kN
Kerb areas, emergency lanes, car parking areas



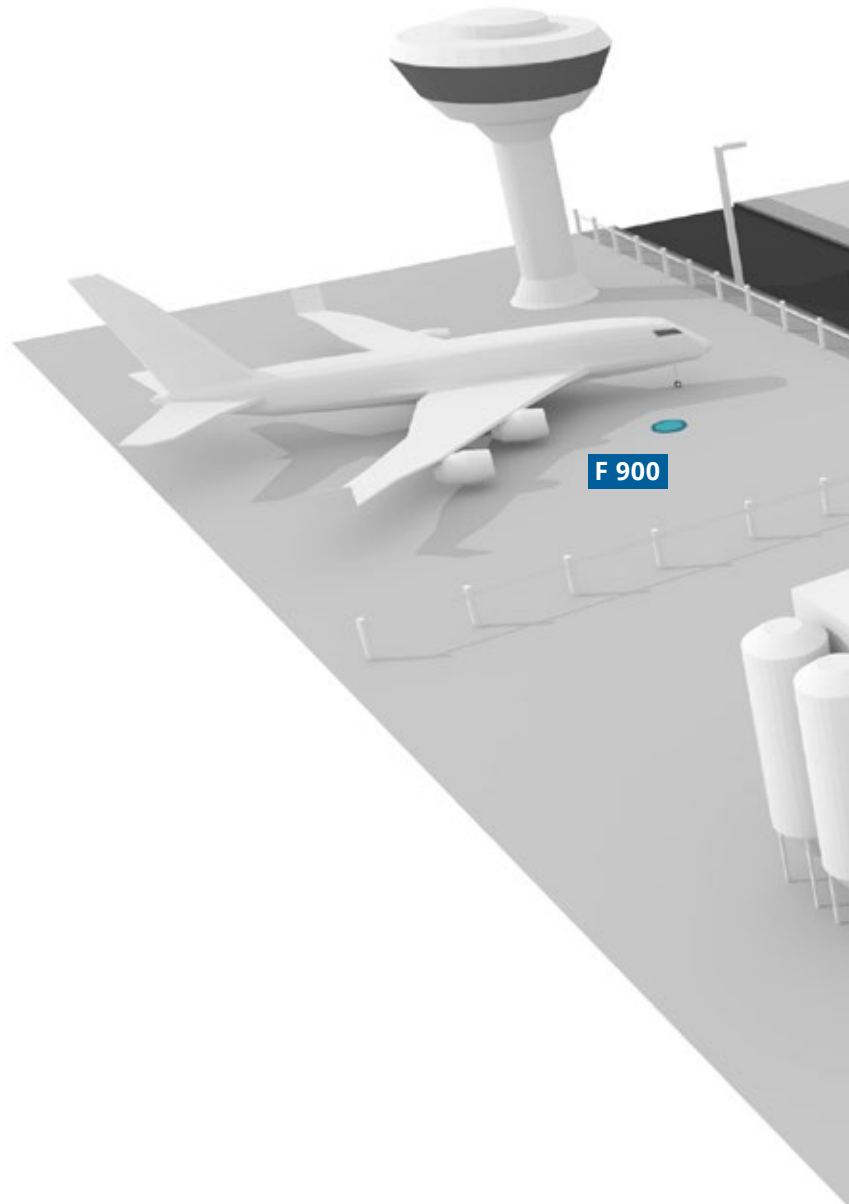
Class D 400
Test load 400 kN
Road surfaces, pedestrian streets



Class E 600
Test load 600 kN
Industry, military, high wheel loads



Class F 900
Test load 900 kN
Airport surfaces, docks, very high wheel loads



HYDROTEC recommends a differentiation by the following fields of application:



Low Traffic
Areas mainly with car traffic and a low volume of heavy goods traffic, e.g. traffic calmed side roads



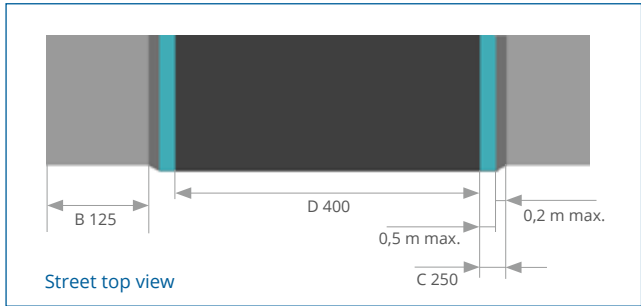
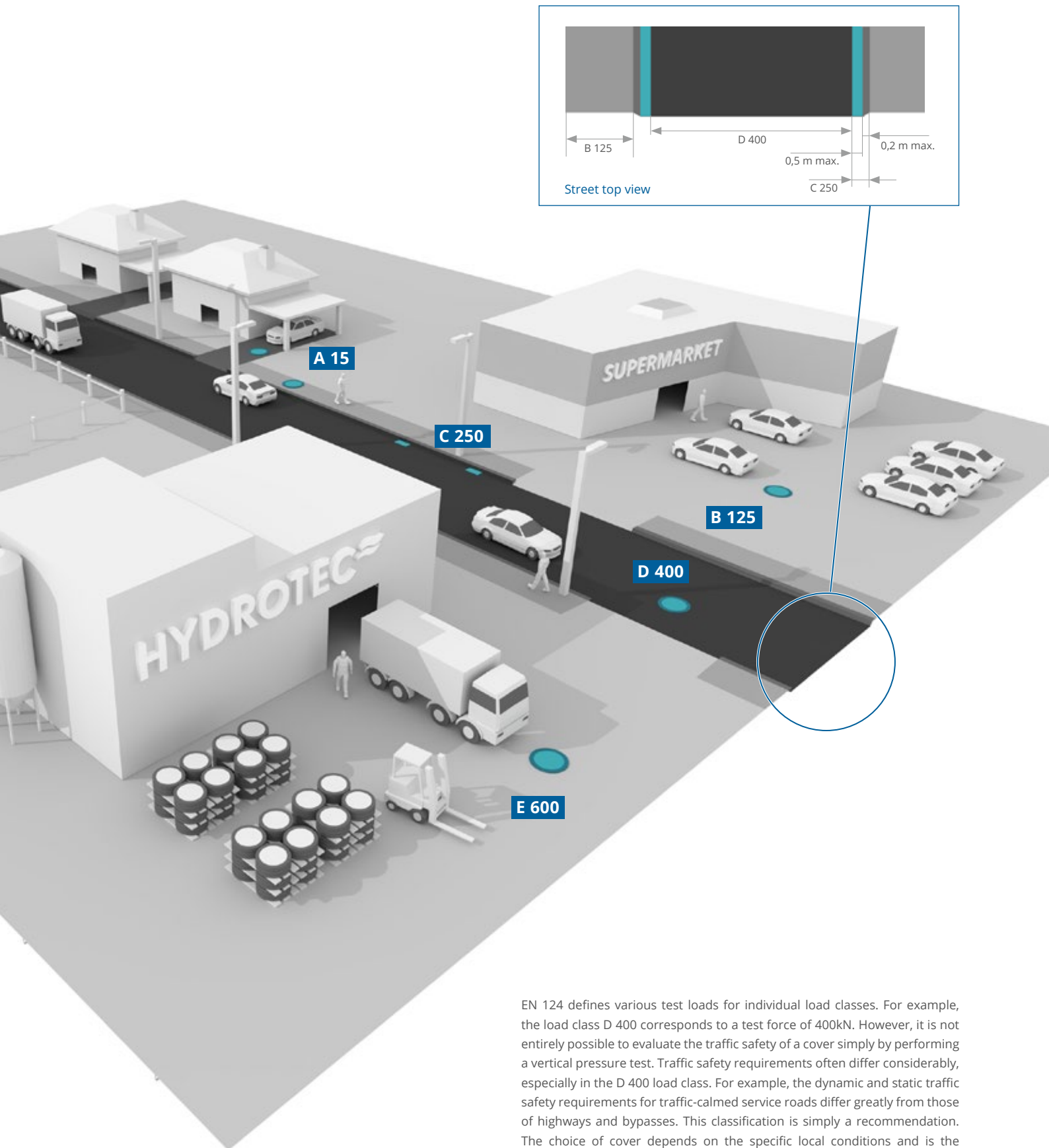
Medium Traffic
Areas with a normal volume of car and goods traffic, e.g. country roads and industrial roads ...



High Traffic
Areas with a high volume of traffic such as e.g. highways and bypasses ...



Intensive Traffic
Areas with intensive traffic load, e.g. curves, crossroads, junctions ...



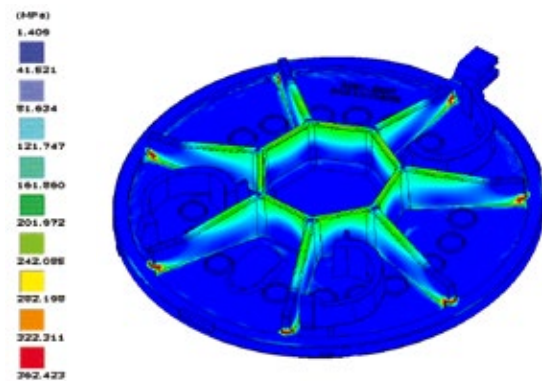
EN 124 defines various test loads for individual load classes. For example, the load class D 400 corresponds to a test force of 400kN. However, it is not entirely possible to evaluate the traffic safety of a cover simply by performing a vertical pressure test. Traffic safety requirements often differ considerably, especially in the D 400 load class. For example, the dynamic and static traffic safety requirements for traffic-calmed service roads differ greatly from those of highways and bypasses. This classification is simply a recommendation. The choice of cover depends on the specific local conditions and is the planner's responsibility. In doubt, you should choose the next higher class.

CERTIFIED QUALITY

SAFETY FIRST ...

Once learnt, never forgotten. As specialists with many years of experience in drainage technology, we place much emphasis on product development. This is where high-tech produces the perfect component. Each and every product is put through rigorous quality checks. Product innovation are tested using a 3D simulation program, „FEM“, with respect to structural behaviour under load. The results of a simulation give us insights into the durability of a component and thus allow us to optimize development.

Cover subjected to a stress of 400 kN with torsion curve



Certified Quality

Our products are tested for compliance with international standards and monitored by internationally accredited test laboratories.

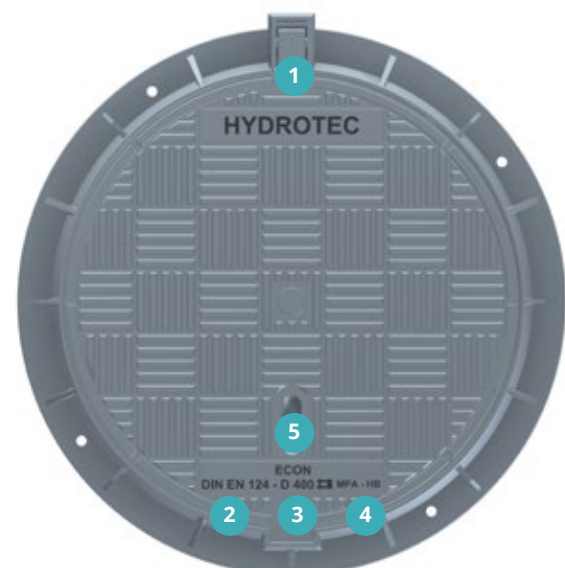


Quality Management

Compliance with EN 124 is assured by material test institutes accredited for testing throughout Europe (test lab accredited to ISO 17025 standard).

EN 124 labeling (item 9 EN 124)

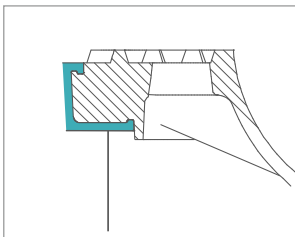
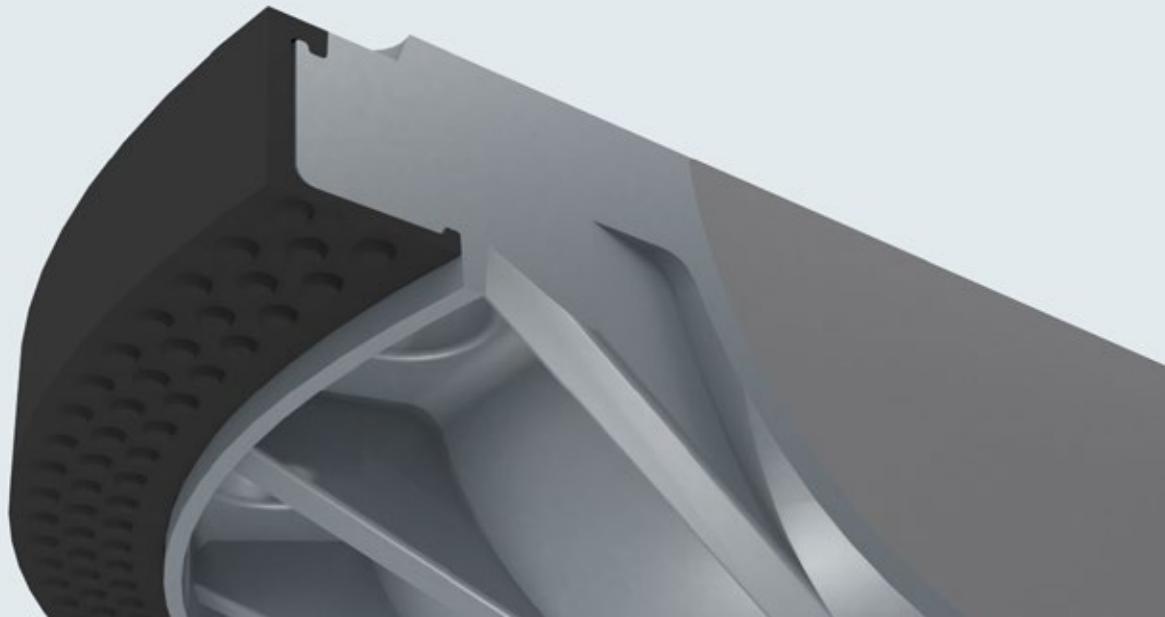
- 1 - Manufacturer ID
- 2 - EN 124 designates the European Standard
- 3 - Load class (e.g. D400)
- 4 - Mark of third party certification body
- 5 - Product name (optional)



Amtliche Materialprüfanstalt Bremen
(Official Testing Institute)

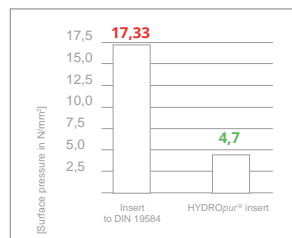
HYDROpur[®] INSERT

Product benefits



HYDROpur[®] insert

Manhole covers have a coated HYDROpur[®] insert. This polyurethane coating is connected to the manhole cover by a special process, whereby two components merge to form an innovative product.



Lower surface pressure

The HYDROpur[®] insert reduces the surface pressure by approx. 72 % (comparison with cover insert according to DIN 19584). As a result, the acting forces can be better absorbed.



Noise reduction

Additional knobs on the underside of the HYDROpur[®] insert allow better circulation between the frame and the lid. This leads to a considerable reduction in noise.

Also available for system ECON and EURO.



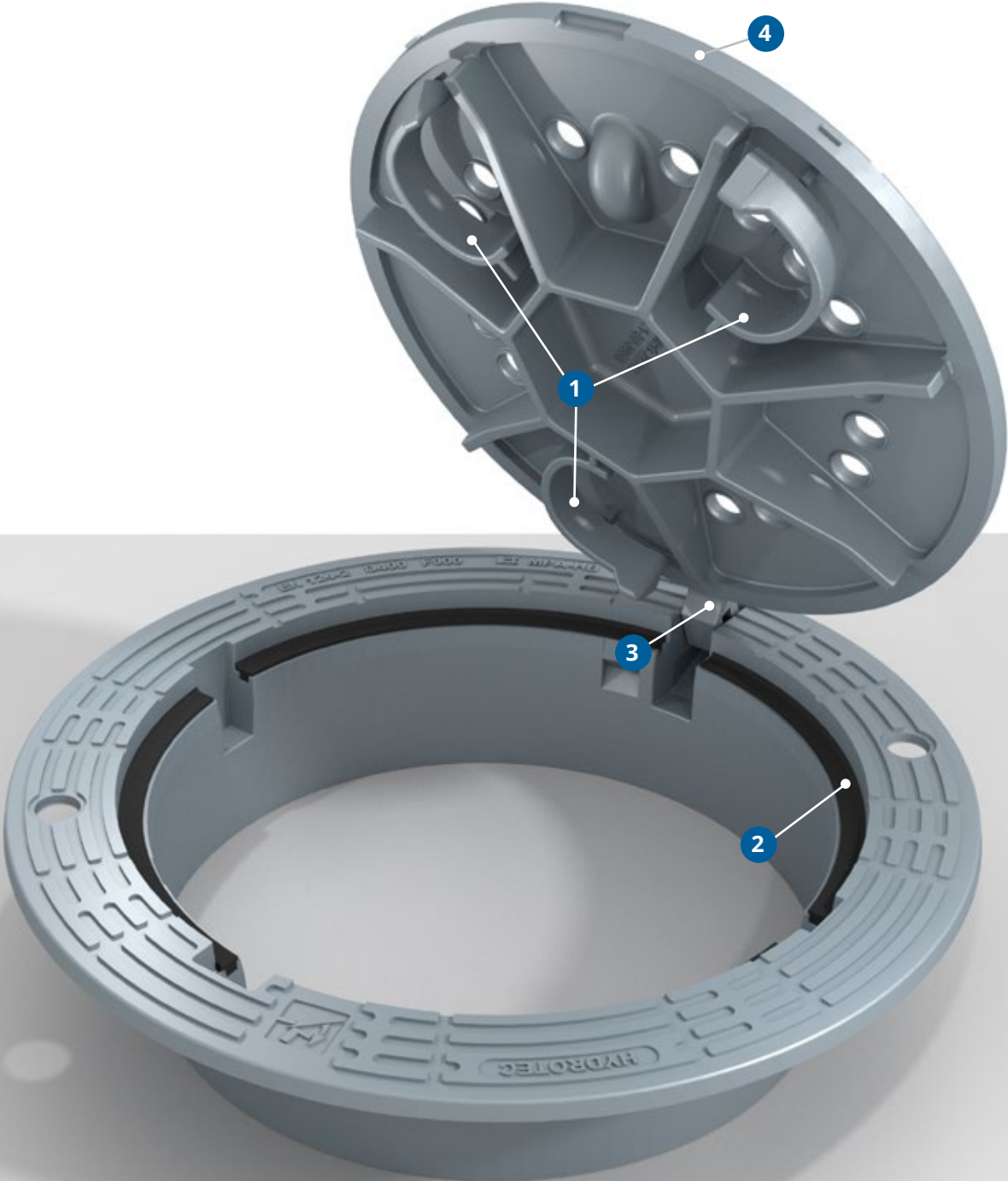
Good resistance

The HYDROpur[®] insert meets the resistance to the following substances:

- frost and de-icing salt
- Resistant to a wide range of chemical substances
- Hydrolysis-resistant
- mineral oil

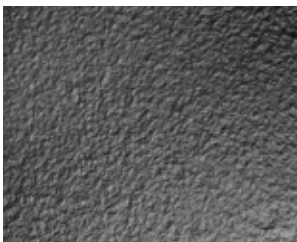
SYSTEM ECON

Product benefits



SYSTEM ECON

Product benefits



Made of ductile cast iron

Ductile cast iron (ductile iron with nodular graphite) is robust, can withstand high static loads and has high corrosion resistance.



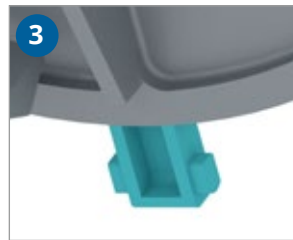
3-point locking system

The 3 point locking ensures that the cover is securely positioned even under heavy loads and offers protection against theft and vandalism.



HYDROpren L-insert

The replaceable HYDROpren L-insert consists of polychloroprene according to DIN 53505. The insert guarantees high abrasion resistance and longevity. L-shape hinders vertical and horizontal contact to iron.



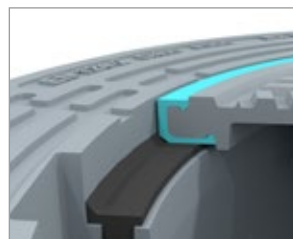
Hinge

The hinge provides maximum safety during 90° locking against accidental closing of the cover, as well as in the 110° inspection position.



Criss-Cross Design

Criss-Cross Design minimizes traffic roll-over noise and improves anti-slip.



Optional: HYDROpur® insert

Characteristics on page 9.



Optional: Turnbuckle

With the turnbuckle, the ECON offers maximum protection against vandalism and unauthorised opening of the cover.



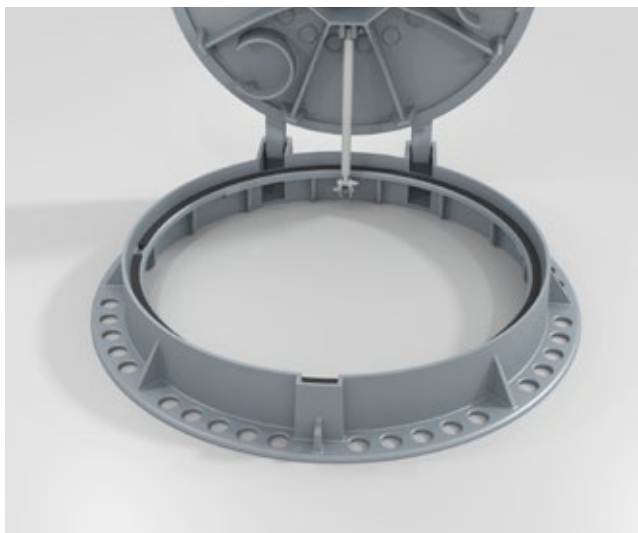
Optional: Gas pressure spring

The gas pressure spring facilitates the opening of the cover.

Only available for ECON 800.

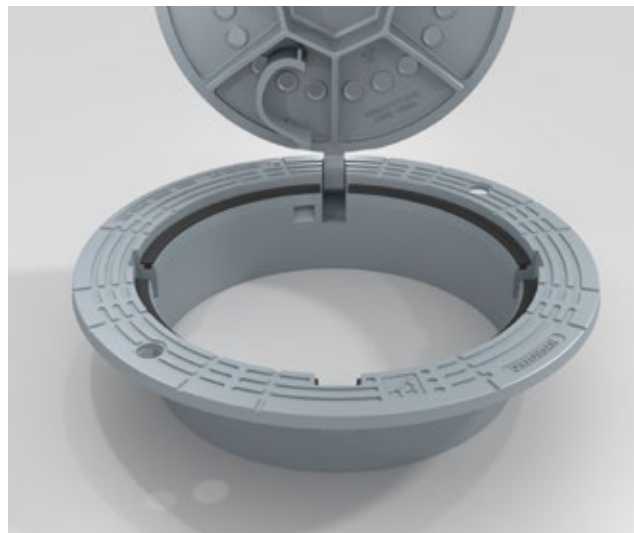
SYSTEM ECON

Frame selection



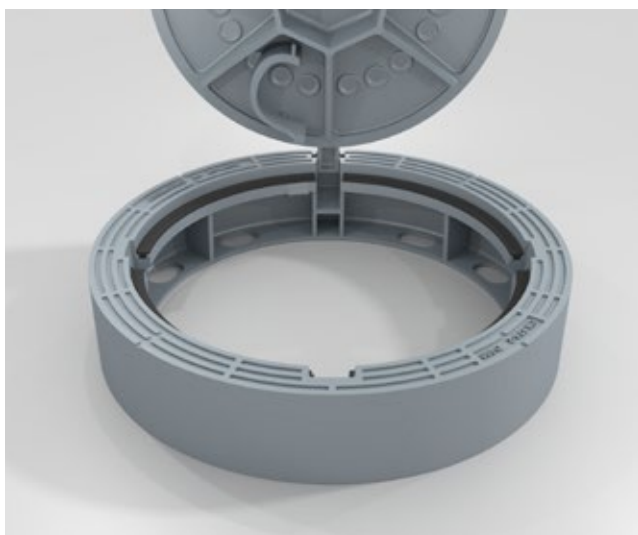
ECON with flange frame (page 13)

The choice is the ECON with flange frame, which allows a fixed and flush fitting on the cone.



ECON SN with self-levelling frame (on page 16)

The ECON SN with self-levelling frame is available for selection, which optimally transfers the traffic load into the roadway layers.



ECON H with liftable frame (on page 14)

The smooth outer surface of the ECON H allows the frame to be pulled up without any problems. The wide support flange ensures maximum stability.

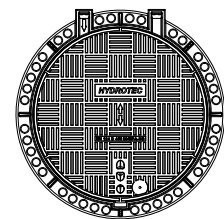
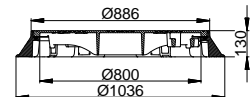
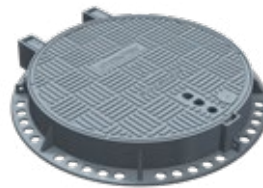
ECON 800 / 600

Class D 400 / E 600, Ductile Cast Iron (GJS), DIN EN 124-2

ECON 800

Type	Art. no.	Over base	Height	kg	Pallet
D 400, double hinge, 3-point locking system, <i>HYDROthen insert</i>					
	894520	1036	130	129	8
Ventholes*	894510	1036	130	129	8

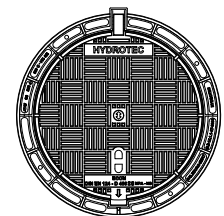
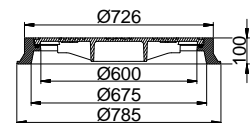
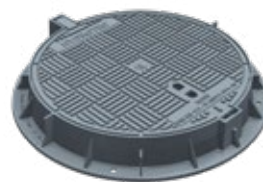
*frame with support for dirt catcher (Art. no. 501125)



894520

ECON 600

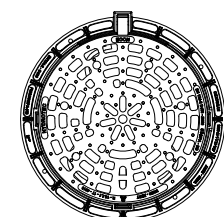
Type	Art. no.	Over base	Height	kg	Pallet
E 600, hinge, 3-point locking system, <i>HYDROpren insert</i>					
	8957084	785	100	82	9
Inlet grating*	8957281	785	100	77	9



894708

D 400, hinge, 3-point locking system, <i>HYDROpren insert</i>					
	894708	785	100	66	9
Ventholes*	894718	785	100	70	9
Inlet grating*	894728	785	100	74	9

ECONpur, D 400, hinge, 3-point locking system, <i>HYDROpur insert</i>					
	89494708	785	100	66	9
Ventholes*	89494718	785	100	70	9




894728

Inlet area 1.050 cm² for Inlet gratings.

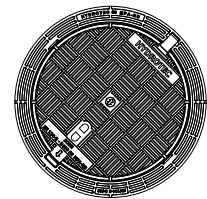
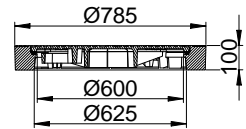
*frame with support for dirt catcher (Art. no. 501001) and opening bar

ECON H 600


Class D 400 / E 600, Ductile Cast Iron (GJS), DIN EN 124-2

ECON H 600 - ROUND   **LIFTABLE FRAME!**

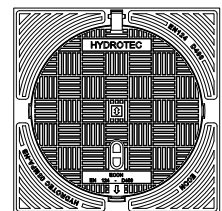
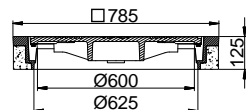
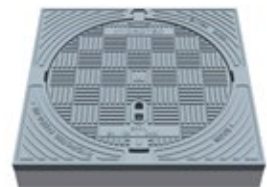
Type	Art. no.	Over base	Height	kg	Pallet
E 600, hinge, 3-point locking system, <i>HYDROpren insert</i>					
	81512004	785	100	84	10
D 400, hinge, 3-point locking system, <i>HYDROpren insert</i>					
	8141401	785	100	88	10
Ventholes*	8141411	785	100	88	10
Inlet grating*	814145	785	100	91	10
	8141501	785	160	103	6
Ventholes*	8141511	785	160	102	6
ECONpur, D 400, hinge, 3-point locking system, <i>HYDROpur insert</i>					
	8149412004	785	100	80	10



8141401

ECON H 600 - SQUARE  **LIFTABLE FRAME!**

Type	Art. no.	Over base	Height	kg	Pallet
D 400, hinge, 3-point locking system, <i>HYDROpren insert</i>					
Concrete / iron frame*	814211	785x785	125	168	6
Ventholes, concrete / iron frame*	814201	785x785	125	168	6




814211

*frame with support for dirt catcher (Art. no. 501001)

ECON SN 800

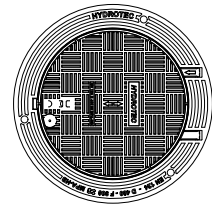
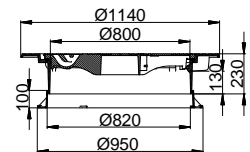
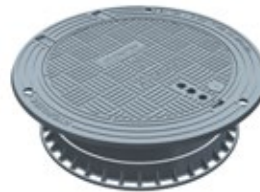
Class D 400 / E 600, Ductile Cast Iron (GJS), DIN EN 124-2

ECON SN 800						 LT	ROLL-IN FRAME!
Type	Art. no.	Over base	Height	kg	Pallet		

D 400, *HYDROther* insert
 Option: Gas pressure spring and turn buckle

Incl. adapter ring	894513	1140	230	180	4		
Ventholes* incl. adapter ring	894512	1140	230	180	4		

*frame with support for dirt catcher (Art. no. 501125 or 501300)





894513



ECON SN 600

Class D 400 / E 600, Ductile Cast Iron (GJS), DIN EN 124-2

ECON SN 600						  ROLL-IN FRAME!	
Type	Art. no.	Over base	Height	kg	Pallet		

E 600, hinge, 3-point locking system, *HYDROpren insert*

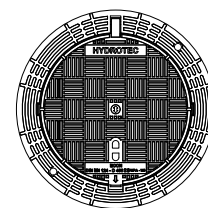
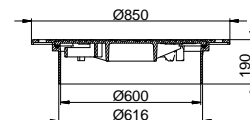
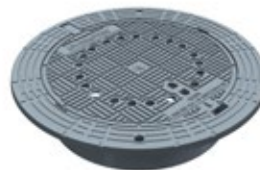
Inlet grating*	814134	850	160	84	5
	8151234	850	190	109	5
Ventholes*	8151224	850	190	109	5
Inlet grating*	8151244	850	190	95	5

D 400, hinge, 3-point locking system, *HYDROpren insert*

	814133	850	160	80	6
Ventholes*	814132	850	160	80	6
	814123	850	190	91	5
Ventholes*	814122	850	190	91	5
Inlet grating*	814124	850	190	95	5
	8141231	850	275	100	4
Ventholes*	8141221	850	275	100	4

ECONpur, D 400, hinge, 3-point locking system, *HYDROpur insert*

	81494133	850	160	80	5
Ventholes*	81494132	850	160	80	5
	81494123	850	190	91	5
Ventholes*	81494122	850	190	91	5
	81494123	850	275	101	4
Ventholes*	81494122	850	275	101	4



814123

Inlet area 1.050 cm² for Inlet gratings.

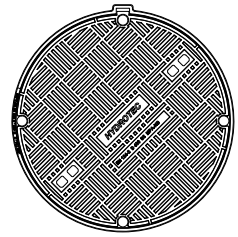
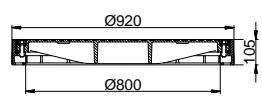
*frame with support for dirt catcher (Art. no. 501001) and opening bar

ECONproof 800 / 600

Class D 400 / E 600, Ductile Cast Iron (GJS), DIN EN 124-2

ECONproof H 800  **WATERTIGHT & LIFTABLE FRAME!**

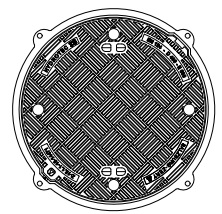
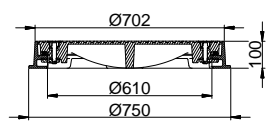
Type	Art. no.	Over base	Height	kg	Pallet
D 400, 4 point-locking system, <i>HYDROpren insert</i>					
	804834	920	105	128	4
Ventholes	804824	920	105	128	4



804834

ECONproof 600   **PRESSURE-TIGHT!**

Type	Art. no.	Over base	Height	kg	Pallet
E 600, 4 point locking system, pressure-tight up to 0,5 bar, <i>HYDROpren insert</i>					
	895753	750	100	85	10



895753

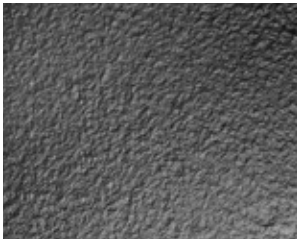
SYSTEM EURO

Product benefits



SYSTEM EURO

Product benefits



Made of ductile cast iron

Ductile cast iron (ductile iron with nodular graphite) is robust, can withstand high static loads and has high corrosion resistance.



Locking system

The point locking ensures that the cover is securely positioned and offers protection against theft and vandalism.



HYDROpren insert

The replaceable HYDROpren insert consists of polychloroprene according to DIN 53505. The insert guarantees high abrasion resistance and longevity.



Hinge

The hinge provides maximum safety during 90° locking against accidental closing of the cover, as well as in the 110° inspection position.



Criss-Cross Design

Criss-Cross Design minimizes traffic roll-over noise and improves anti-slip.



Optional: HYDROpur® insert

Characteristics on page 7.

EURO 600

Class B 125 - D 400, Ductile Cast Iron (GJS), DIN EN 124-2

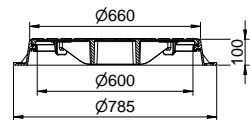
EURO 600					
Type	Art. no.	Over base	Height	kg	Pallet

D 400, hinge, locking system, *HYDROpren insert*

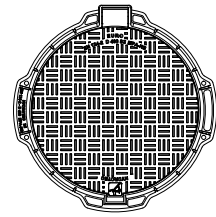
	89468614	785	100	50	10
Ventholes*	89468615	785	100	50	10
Inlet grating*	89468616	785	100	50	10

*Inlet area 1.065 cm²

*frame with support for dirt catcher (Art. no. 501200)



89468616

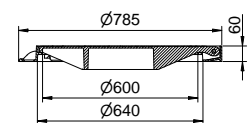
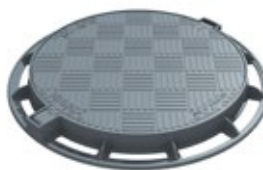


89468614

EURO 600					
Type	Art. no.	Over base	Height	kg	Pallet

C 250, hinge, locking system, *HYDROpren insert*

	893593	785	60	42	11
Inlet grating*	893063	785	60	43	12



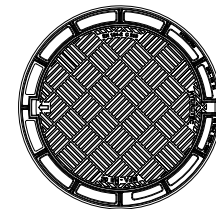
B 125, hinge, locking system, *HYDROpren insert*

	892593	785	60	39	16
--	--------	-----	----	----	----

B 125

	892062	785	60	38	16
--	--------	-----	----	----	----

*Inlet area 1.090 cm²



893593

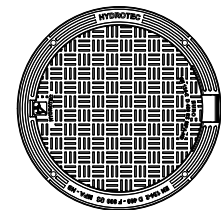
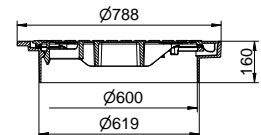
EURO SN / EUROtight 600

Class D 400, Ductile Cast Iron (GJS), DIN EN 124-2

EURO SN 600 ROLL-IN FRAME!

Type	Art. no.	Over base	Height	kg	Pallet
D 400, hinge, 3-point locking system, <i>HYDROpren insert</i>	894719	788	160	68	6
EUROpur, D 400, hinge, 3-point locking system, <i>HYDROpur insert</i>	8947193	788	160	68	6
Ventholes*	8947194	788	160	68	6

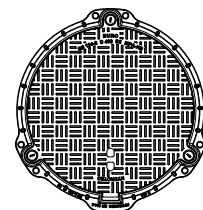
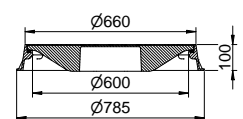
*frame with support for dirt catcher (Art. no. 501200)



894719

EUROtight 600 WATERTIGHT!

Type	Art. no.	Over base	Height	kg	Pallet
D 400, 3-point locking system, lifting pockets, <i>HYDROpren insert</i>	8946750	785	100	55	10



SCANDICpur SN 800 / 640

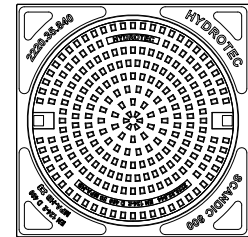
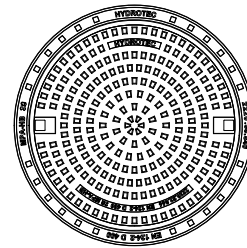
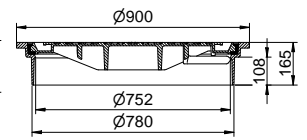
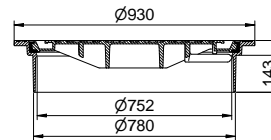
Class D 400, Ductile Cast Iron (GJS), DIN EN 124-2

SCANDICpur SN 800 MT **ROLL-IN FRAME!**

Type	Art. no.	Over base	Height	kg	Pallet
------	----------	-----------	--------	----	--------

D 400, 2-point locking system, *HYDROpur* insert

89436840	930	200	112	4
89435840	900x900	165	118	4



89436840

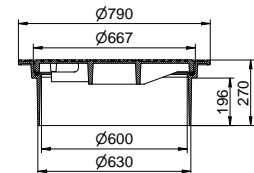
89435840

SCANDIC SN 640 MT **ROLL-IN FRAME!**

Type	Art. no.	Over base	Height	kg	Pallet
------	----------	-----------	--------	----	--------

D 400, 2-point locking system, *HYDROpren* insert

894712	790	270	105	4
--------	-----	-----	-----	---

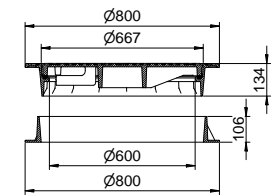


894712

D 400, 2-point locking system, flange adapter frame, *HYDROpren* insert

8947121	800	134/106	108	8
---------	-----	---------	-----	---

Fits manholes and pipes with clear diameter of 640/650 mm!
Cover lifter see page 47



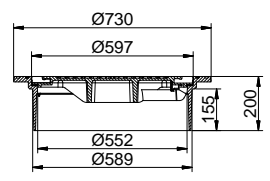
8947121

SCANDIC SN 600 / TRIX SN 700 / TRIX 600

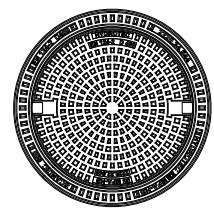
Class D 400, Ductile Cast Iron (GJS), DIN EN 124-2

SCANDIC SN 600 MT **ROLL-IN FRAME!**

Type	Art. no.	Over base	Height	kg	Pallet
D 400, 2-point locking system, <i>HYDROpren insert</i>					
	89463510	730	200	85	5
Inlet grating*					
	89463500	730	200	86	5
	89463513	730	275	98	4



D 400, 2-point locking system, <i>HYDROpur insert</i>					
	8946350	730	200	85	5

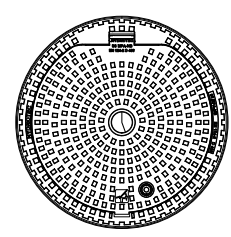
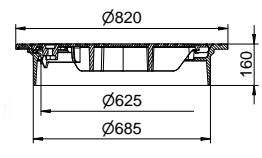


89463510

Fits manholes and pipes with clear diameter of 600 mm! Cover lifter see page 47
*Inlet area 800 cm²

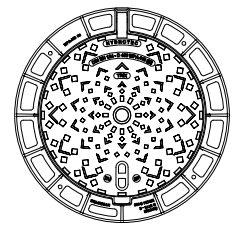
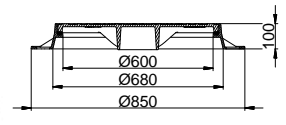
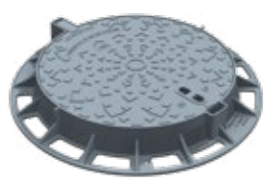
TRIX SN 700 LT **ROLL-IN FRAME!**

Type	Art. no.	Over base	Height	kg	Pallet
D 400, 3-point locking system, safety hinge, <i>HYDROpren insert</i>					
	89466905	820	160	82	6



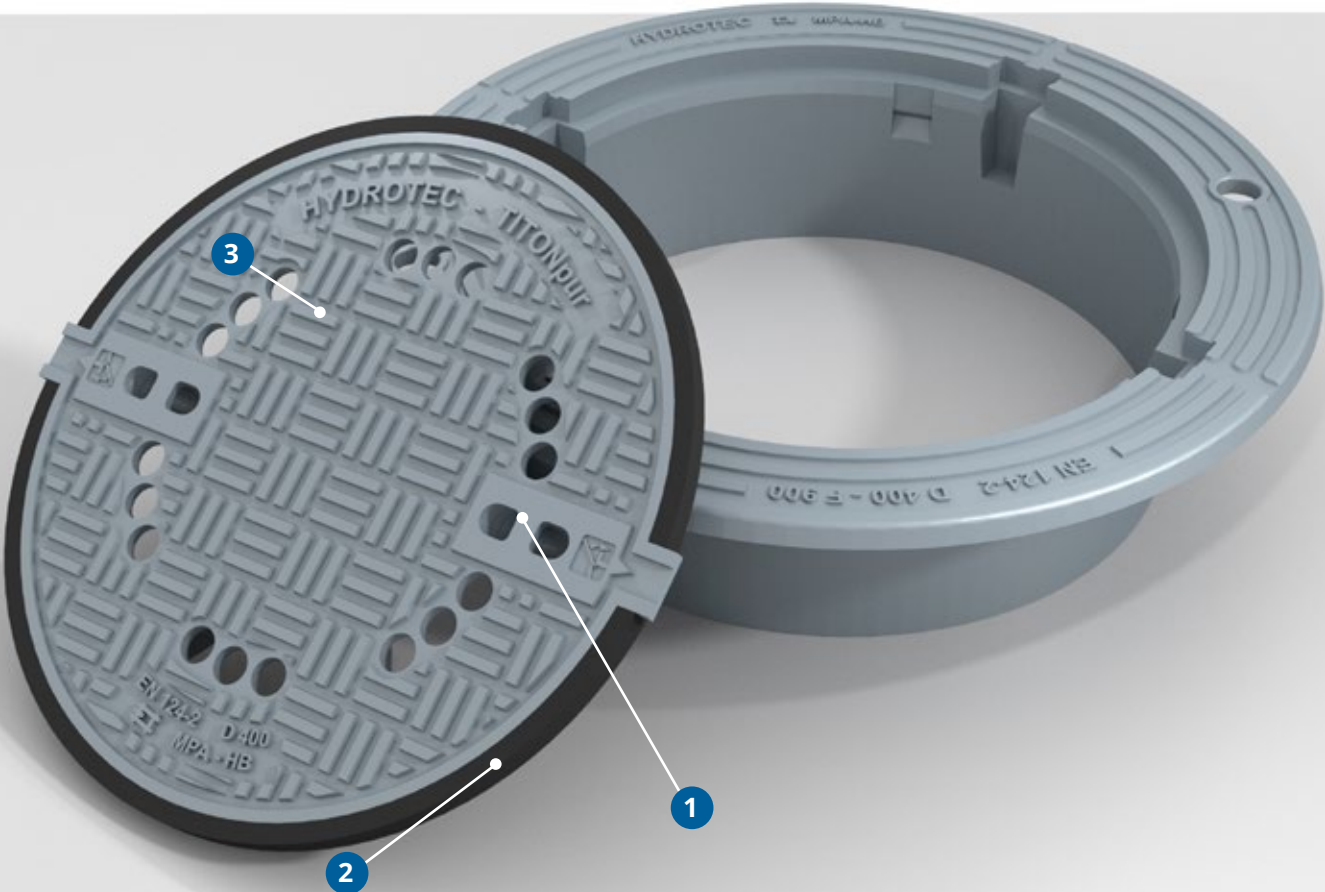
TRIX 600 LT

Type	Art. no.	Over base	Height	kg	Pallet
D 400, 3-point locking system, safety hinge, <i>HYDROpren insert</i>					
	894004	850	100	63	10



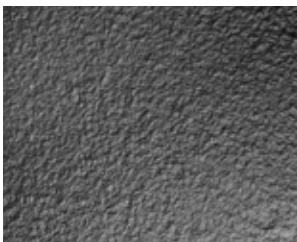
SYSTEM TITONpur

Product benefits



SYSTEM TITON^{pur}

Product benefits



Made of ductile cast iron

Ductile cast iron (ductile iron with nodular graphite) is robust, can withstand high static loads and has high corrosion resistance.



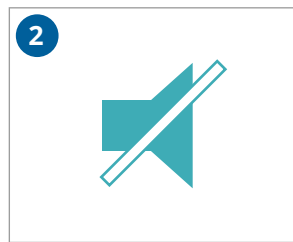
2 point spring locking

The 2 point spring locking ensures that the cover is securely positioned even under heavy loads and offers protection against theft and vandalism.



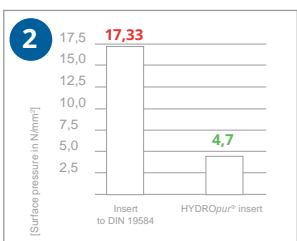
HYDRO^{pur}®-insert

Manhole covers have a coated HYDRO^{pur}®-insert. This polyurethane coating is connected to the manhole cover by a special process, whereby two components merge to form an innovative product.



Rattle free

In the case of slow expansion to the original condition of the HYDRO^{pur}®-insert after loading, the manhole cover is secured against the rapid cracking of the cover.



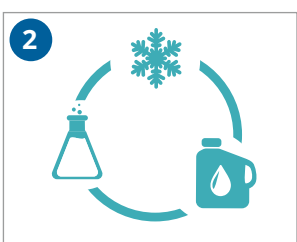
Lower surface pressure

The HYDRO^{pur}® insert reduces the surface pressure by approx. 72 % (comparison with cover insert according to DIN 19584). As a result, the acting forces can be better absorbed.



Noise reduction

Additional knobs on the underside of the HYDRO^{pur}® insert allow better circulation between the frame and the lid. This leads to a considerable reduction in noise.



Good resistance

The HYDRO^{pur}® insert meets the resistance to the following substances:

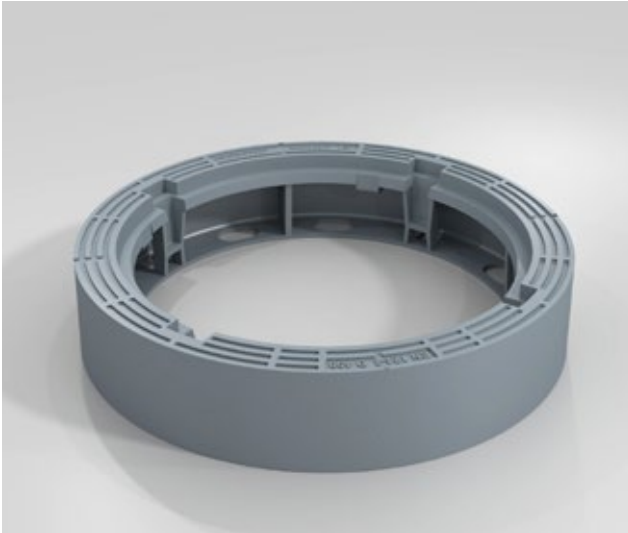
- frost and de-icing salt
- Resistant to a wide range of chemical substances
- Hydrolysis-resistant
- mineral oil



Design

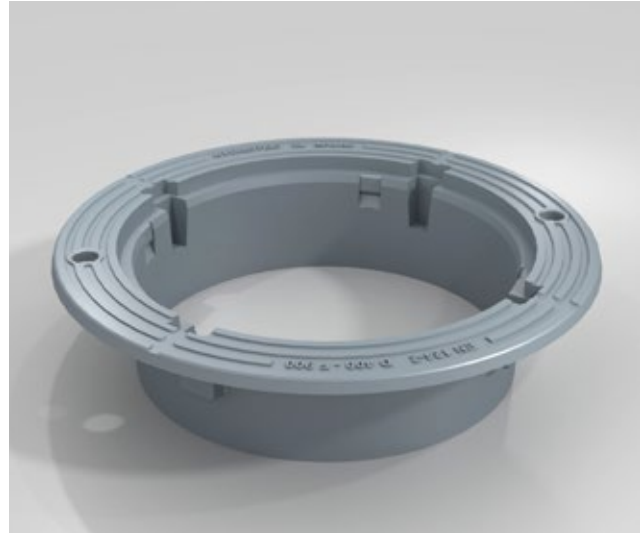
Criss-Cross Design minimizes traffic roll-over noise and improves anti-slip.

SYSTEM TITONpur Frame selection



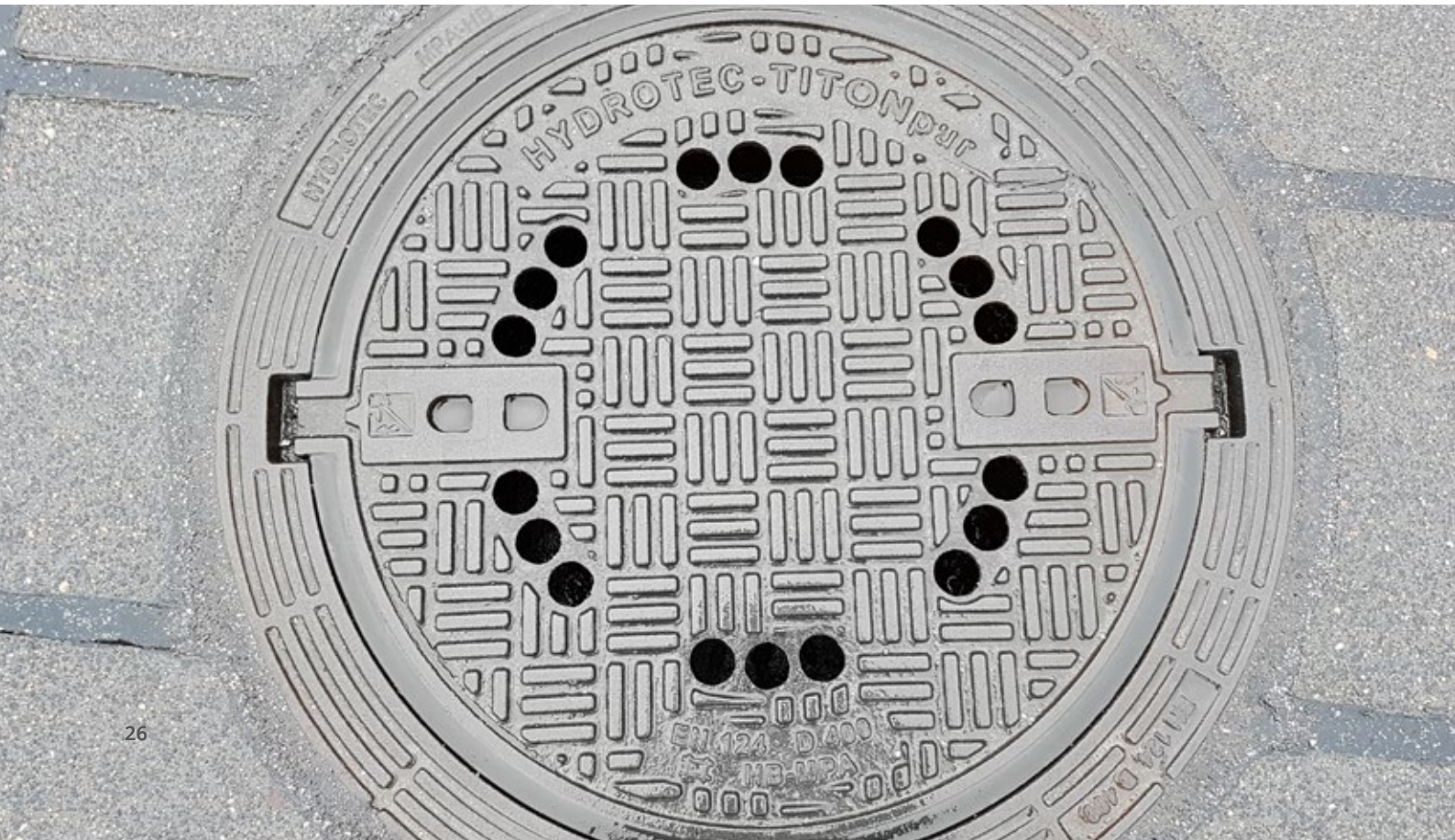
TITONpur H with liftable frame (on page 25)

The smooth outer surface of the TITONpur H allows the frame to be pulled up without any problems. The wide support flange with mortar pockets ensures maximum stability.



TITONpur SN with self-levelling frame (on page 26)

The TITONpur SN with self-levelling frame is available for selection, which optimally transfers the traffic load into the roadway layers.



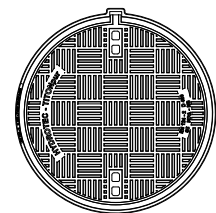
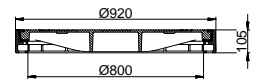
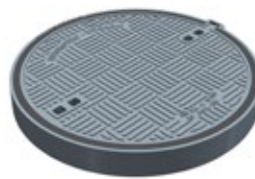
TITONpur H

Class D 400, Ductile Cast Iron (GJS), DIN EN 124-2

TITONpur H 800



Type	Art. no.	Over base	Height	kg	Pallet
	81494813	920	105	128	4
Ventholes*	81494812	920	105	128	4

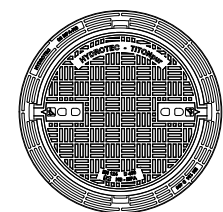
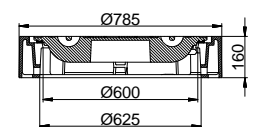


81494813

TITONpur H 600



Type	Art. no.	Over base	Height	kg	Pallet
	81494433	785	160	101	8
Ventholes*	81494432	785	160	101	8



81494433

* frame with support for dirt catcher (Art. no. 501001)

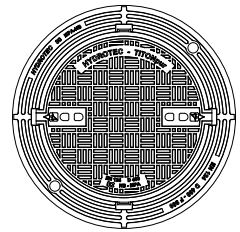
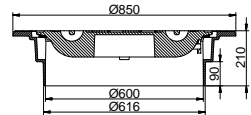
TITONpur SN

Class D 400, Ductile Cast Iron (GJS), DIN EN 124-2

TITONpur SN 600						ROLL-IN FRAME!
Type	Art. no.	Over base	Height	kg	Pallet	

	81494423	850	210	92	5	
Ventholes*	81494422	850	210	92	5	

* frame with support for dirt catcher (Art. no. 501001)





81494423



INSPECTION COVERS 1000

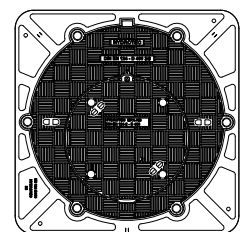
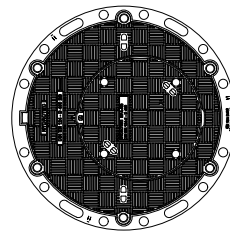
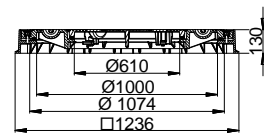
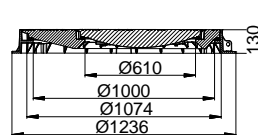
Class D 400, Ductile Cast Iron (GJS), DIN EN 124-2

1000 / 600						 	WATERTIGHT!
Type	Art. no.	Over base	Height	kg	Pallet		

For e.g. pumping or well shafts, optimized inspection through cover in cover system

Round frame	894570	1236	130	237	5
Square frame	8945701	1236x1236	130	264	5

Cover I (1000), 6 stainless steel bolts, [HYDROpren insert](#)
 Cover II (600), 4 stainless steel bolts, [HYDROpren insert](#)



894570

8945701



SQUARE / RECTANGULAR INSPECTIONS COVERS

Class D 400, Ductile Cast Iron (GJS), DIN EN 124-2

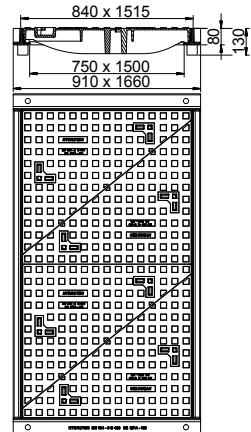
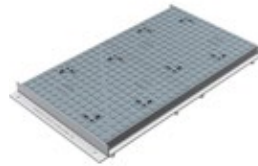
TELECOM HT2C - 750 X 1500



Type	Art. no.	Over base	Height	kg	Pallet
------	----------	-----------	--------	----	--------

D 400, lifting pockets for easy handling, steel frame

894282	1660x910	130	236	
--------	----------	-----	-----	--



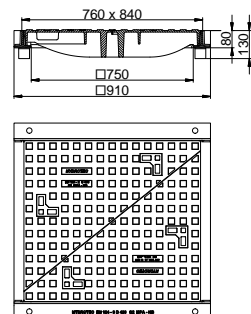
TELECOM HT1C - 750 X 750



Type	Art. no.	Over base	Height	kg	Pallet
------	----------	-----------	--------	----	--------

D 400, lifting pockets for easy handling, steel frame

894281	910x910	130	127	
--------	---------	-----	-----	--



SQUARE INSPECTION COVERS

Class B 125 / D 400, Ductile Cast Iron (GJS), DIN EN 124-2

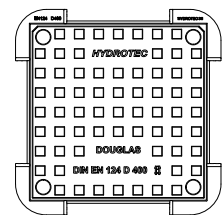
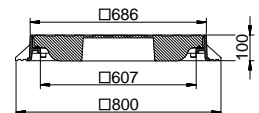
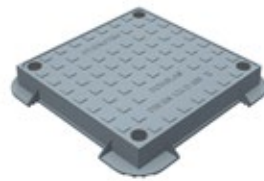
DOUGLAS 600 X 600

WATERTIGHT!

Type	Art. no.	Over base	Height	kg	Pallet
------	----------	-----------	--------	----	--------

D 400, coupled by means of 4 stainless steel bolts, watertight, insert, cover lifted out by means of screw openings

894539	800x800	100	90	10
--------	---------	-----	----	----

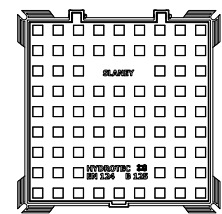
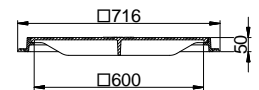


SLANEY 600 X 600

Type	Art. no.	Over base	Height	kg	Pallet
------	----------	-----------	--------	----	--------



B 125, locking with spring bar prevents unauthorized opening of the cover, hinge, theft protection = cover firmly attached to frame

892487	716x716	50	40	14
--------	---------	----	----	----



SQUARE INSPECTION COVERS

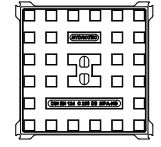
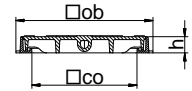
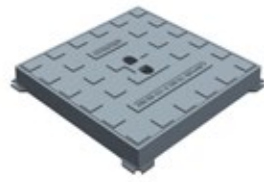
Class B 125 / C 250, Ductile Cast Iron (GJS), DIN EN 124-2



PAVER  

Type	Art. no.	Over base	Height	kg	Pallet
------	----------	-----------	--------	----	--------

C 250, single seal

co 325x325	8936 41	425x425	50	24,5	
co 420x420	8936 42	505x505	50	32,5	
co 490x490	8936 45	620x620	50	48	

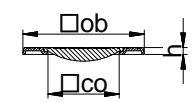


PAVER  

Type	Art. no.	Over base	Height	kg	Pallet
------	----------	-----------	--------	----	--------


B 125, flat seal

co 175	8920 30	300x300	18	6	40
co 250	8920 40	400x400	18	11	40
co 350	8920 50	500x500	30	19	40
co 425	8920 60	600x600	30	25	20
co 500	8920 70	700x700	35	35	15
co 610	8920 80	800x800	40	53	15
co 700	8920 90	900x900	50	68	15
co 800	8921 00	1000x1000	70	96	14

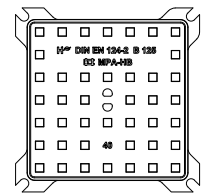
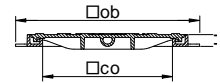


SQUARE INSPECTION COVERS

Class B 125, Ductile Cast Iron (GJS), DIN EN 124-2

PAVER						
Type	Art. no.	Over base	Height	kg	Pallet	

B 125					
co 245x245	892221	330x330	25	7,4	40
co 275x275	892141	400x400	25	11	40
co 375x375	892151	500x500	25	15	40
co 475x475	892161	600x600	25	24	20
co 575x575	892171	700x700	25	32	10
co 700x700	892180	800x800	55	76	10

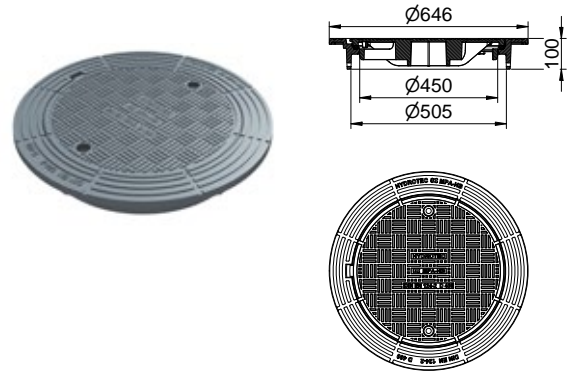


PIPE COVERS

Class C 250 / D 400, Cast Iron, DIN EN 124-2

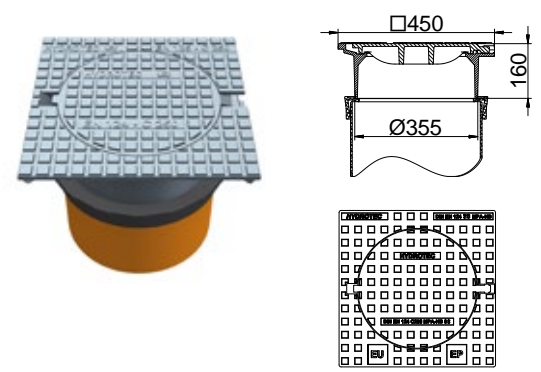
PIPE COVER 500

Type	Art. no.	Over base	Height	kg	Pallet
D 400, for internal housing of DN 500 pipes, locking system, <i>HYDROOpen insert</i> , option: turn-buckle	8947130	646	100	45	10



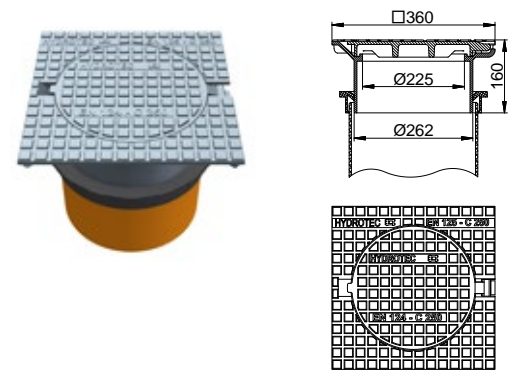
PIPE COVER 400

Type	Art. no.	Over base	Height	kg	Pallet
C 250, hinge, lift-out position for cover in 180° position = theft protection in fitted position	893685	450x450	160	38	-
rubber sleeve	0890217				



PIPE COVER 300

Type	Art. no.	Over base	Height	kg	Pallet
C 250, hinge, lift-out position for cover in 180° position = theft protection in fitted position, with rubber sleeve for holding DN 300 pipe	893105	360x360	160	19	24
rubber sleeve	0890218				



PIPE COVERS

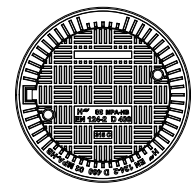
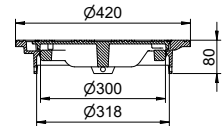
Class C 250 / D 400, Cast Iron, DIN EN 124-2

PIPE COVER 315

Type	Art. no.	Over base	Height	kg	Pallet
------	----------	-----------	--------	----	--------

D 400, locking system, for internal housing DN 315 pipes

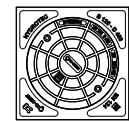
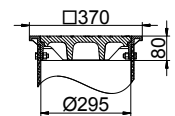
	8947090	420	80	15	42
Inlet grating	8947091	420	80	15	42



8947090

D 400, fastened by 2 stainless steel bolts, for outside housing of DN 315 pipe, 4x through bore hole (Ø 11 mm)

	894623	370x370	80	25	60
--	--------	---------	----	----	----



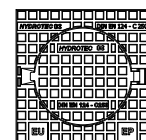
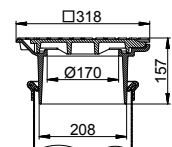
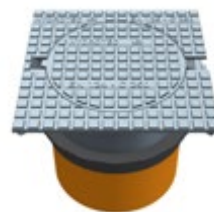
894623

PIPE COVER 250

Type	Art. no.	Over base	Height	kg	Pallet
------	----------	-----------	--------	----	--------



C 250, hinge, lift-out position for cover in 180° position = theft protection in fitted position

	893106	318x318	157	16	72
rubber sleeve	0890219				



KERB DRAINAGE

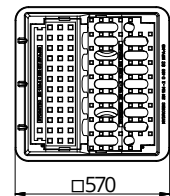
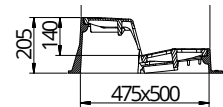
Class C 250, Ductile Cast Iron (GJS), EN 124

HYDROkerb S 500							
Type	Art. no.	Over base	Inlet area cm ²	Height	kg		

C 250, Form T, 2-point locking system, 120° position of inspection

993303	570x570	850	205	52
--------	---------	-----	-----	----

option: Anti-Theft-Protection



KERB DRAINAGE

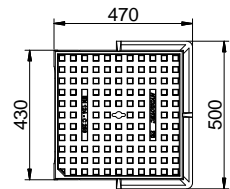
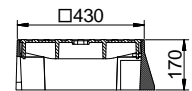
Class C 250, Ductile Cast Iron (GJS), EN 124

KERB DRAINAGE 450 X 450

Type	Art. no.	Over base	Inlet area cm ²	Height	kg
------	----------	-----------	----------------------------	--------	----

C 250, Form T, 3-sided flange, lifting pocket

9934501	500x470	270	170	50
---------	---------	-----	-----	----

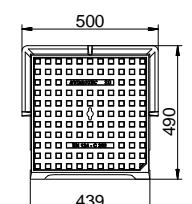
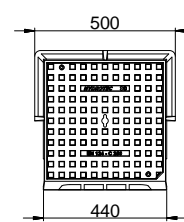
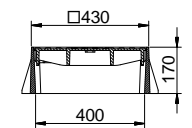
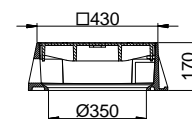


KERB DRAINAGE 450 X 450

Type	Art. no.	Over base	Inlet area cm ²	Height	kg
------	----------	-----------	----------------------------	--------	----

C 250, Form A, 3-sided flange, lifting pocket

Locked, with grating*	993450	500x496	240	170	58
	9934502	500x490	300	170	48



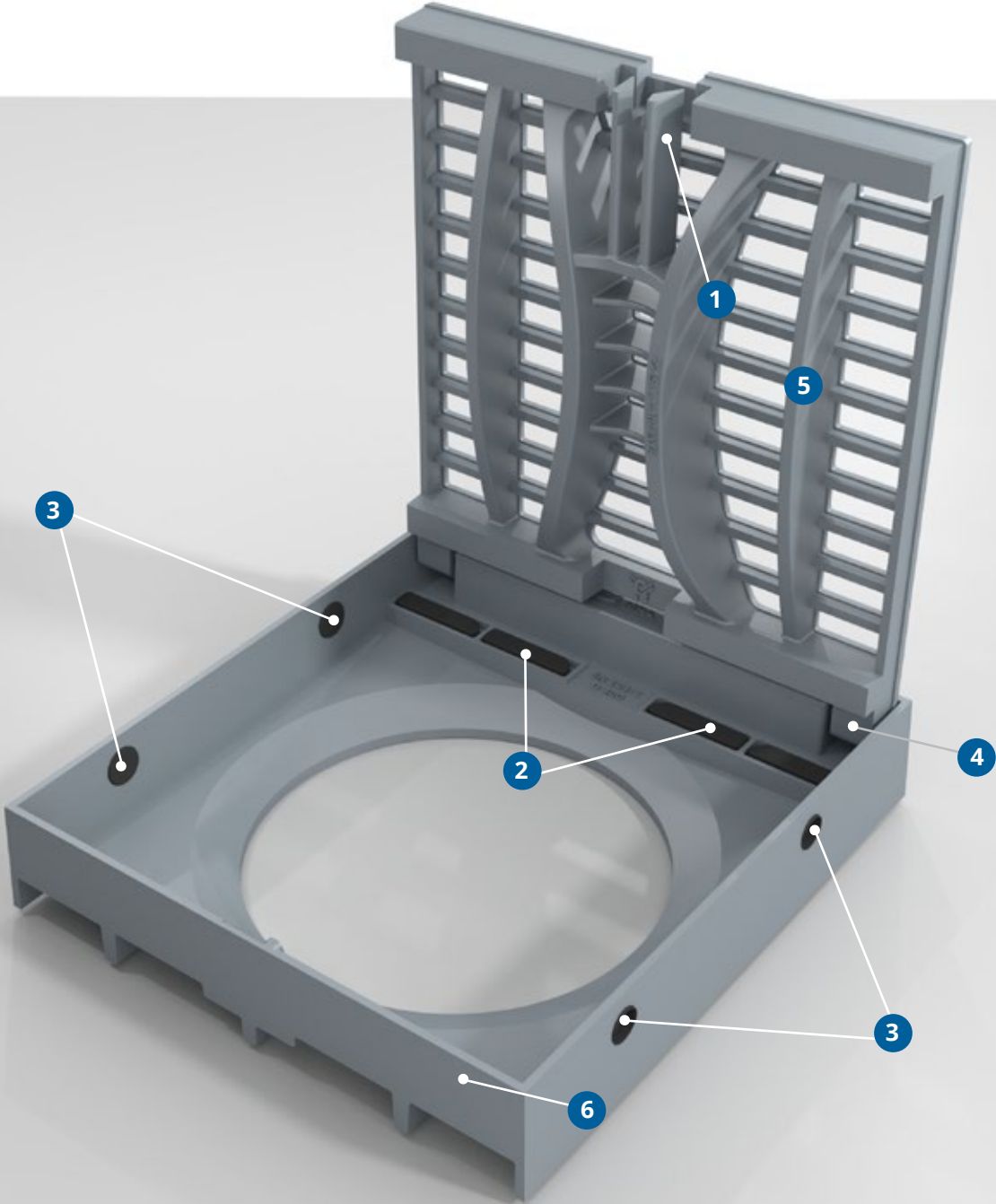
993450

9934502

*Support for dirt bucket

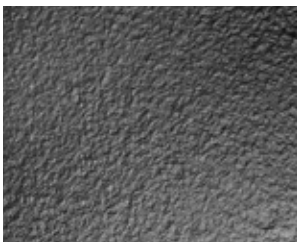
SYSTEM ECON GULLY TOPS

Product benefits



SYSTEM ECON GULLY TOPS

Product benefits



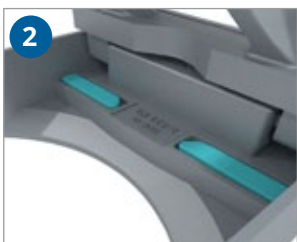
Made of ductile cast iron

Ductile cast iron (ductile iron with nodular graphite) is robust, can withstand high static loads and has high corrosion resistance.



Spring locking system

The ECON gully tops are equipped with a centred spring locking system. This is located below the grate and functions as a safety lock.



HYDROpren insert

The replaceable HYDROpren insert consists of polychloroprene according to DIN 53505. The insert guarantees high abrasion resistance and longevity.



Closable drainage holes

Four openings in the frame provide for an optional construction times drainage. The openings can be closed with the supplied plastic plugs if necessary or at the end of the operation.



Hinge

The design of the hinge enables 90° locking and 110° locking (inspection position) of the grate. At 90°, the grate can be completely removed if required.



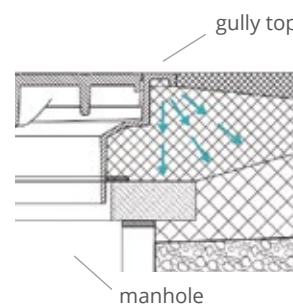
Pedestrian friendly

With a slot width of 25 mm, the ECON gully tops are perfect for pedestrian streets.



Liftable frame

The smooth outer surface allows the frame to be easily lifted.



Optional: Self-levelling frame

The self-levelling frame transfers the traffic load into the road layers, which reduces the load on the shaft.

ECON GULLY TOPS

Class C 250 / D 400, Ductile Cast Iron (GJS), DIN EN 124-2

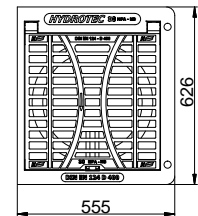
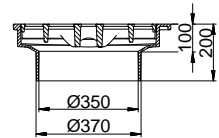
ECON SN 500 X 500 ROLL-IN FRAME!

Type	Art. no.	Over base	Inlet area cm ²	Height	kg
------	----------	-----------	----------------------------	--------	----

D 400, flat, self-levelling frame

934952	626x555	950	200	67
--------	---------	-----	-----	----

Frame for support for dirt bucket



ECON 500 X 500

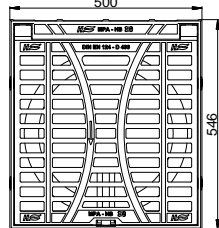
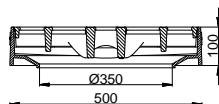
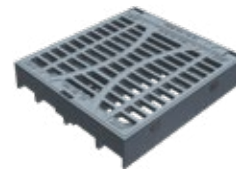
Type	Art. no.	Over base	Inlet area cm ²	Height	kg
------	----------	-----------	----------------------------	--------	----

D 400

Flat	934951	500x546	950	100	57
Concave	9349812	500x546	950	125	63

C 250

Flat	933951	500x546	950	100	55
Concave	9339812	500x546	950	125	61
Concave	9339811	500x546	950	160	67



934951

All frames for support for dirt bucket

ECON GULLY TOPS

Class C 250 / D 400, Ductile Cast Iron (GJS), DIN EN 124-2

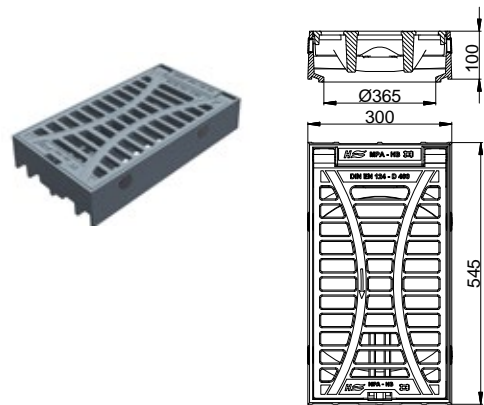
ECON 300 X 500					
Type	Art. no.	Over base	Inlet area cm ²	Height	kg

D 400

Flat	934941	545x300	500	100	39
Concave	934971	545x300	500	100	38

C 250

Flat	933921	545x300	500	100	37
Concave	933971	545x300	500	100	36



934941

All frames for support for dirt bucket



GULLY TOPS

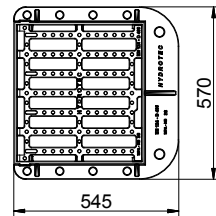
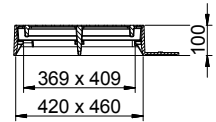
Class D 400, Ductile Cast Iron (GJS), DIN EN 124-2

DUNA 460 X 420 LT

Type	Art. no.	Over base	Inlet area cm ²	Height	kg
------	----------	-----------	----------------------------	--------	----

D 400, 3-sided flange, 2 point frictionally locking

	994265	570x545	1020	100	34
--	--------	---------	------	-----	----

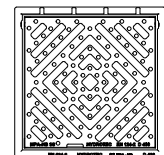
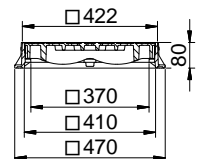


DUNA 400 X 400 LT

Type	Art. no.	Over base	Inlet area cm ²	Height	kg
------	----------	-----------	----------------------------	--------	----

D 400, 3-sided flange, 2 point frictionally locking, 3-sided frame

	994304	470x470	650	80	28
--	--------	---------	-----	----	----



GULLY TOPS

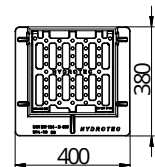
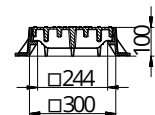
Class D 400, Ductile Cast Iron (GJS), DIN EN 124-2

DUNA 300 X 300

Type	Art. no.	Over base	Inlet area cm ²	Height	kg
------	----------	-----------	----------------------------	--------	----

D 400, 3-sided flange, 2 point frictionally locking

994277 400x380 550 100 20

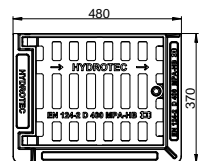
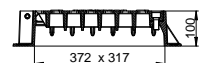


BANDON 410 X 320

Type	Art. no.	Over base	Inlet area cm ²	Height	kg
------	----------	-----------	----------------------------	--------	----

D 400, 3-sided flange, hinge, locking system

994309 480x370 374 100 20



GULLY TOPS

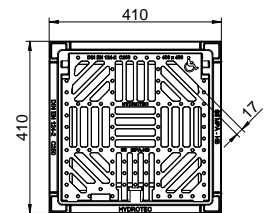
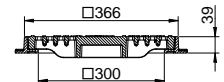
Class D 400, Ductile Cast Iron (GJS), DIN EN 124-2

FLAT

Type	Art. no.	Over base	Inlet area cm ²	Height	kg
------	----------	-----------	----------------------------	--------	----

D 400

400x400	993294	410x410	220	39	18
500x500	993295	510x510	780	39	25
600x600	993296	610x610	1550	39	36

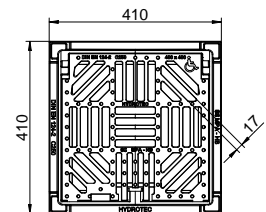
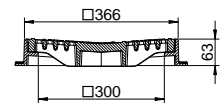


CONCAVE

Type	Art. no.	Over base	Inlet area cm ²	Height	kg
------	----------	-----------	----------------------------	--------	----

D 400

400x400	993297	410x410	220	39	20
500x500	993298	510x510	920	39	29
600x600	993299	610x610	1480	39	38



HOME AND YARD DRAINAGE

Class B 125 - D 400, Cast Iron (GJL), EN 124

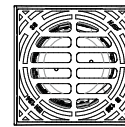
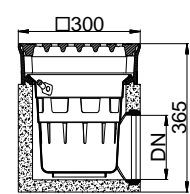
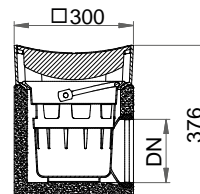
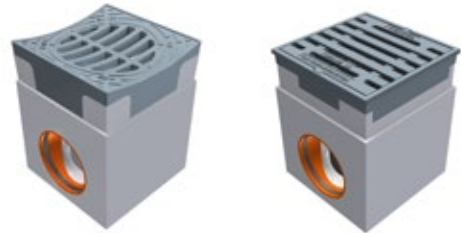
GULLY BOX 300 X 300



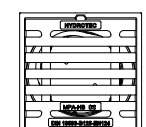
Type	Art. no.	Height	kg	Pallet
------	----------	--------	----	--------

Incl. Mud bucket, vertical outlet with sleeve for pipe connection DN 100/DN 150

D 400, DN 100, flat	9042 9090	365	63,8	12
D 400, DN 150, flat	9042 9080	365	62,8	12
B 125, DN 100, flat	9022 9090	365	60,8	12
B 125, DN 150, flat	9022 9080	365	59,8	12
B 125, DN 100, concave	9022 7090	376	61,0	12
B 125, DN 150, concave	9022 7080	376	60,0	12



90227090



90229090

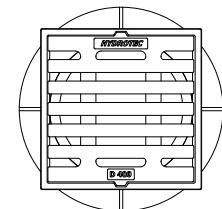
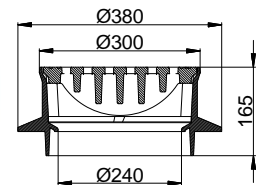
SALZACH 300 X 300



Type	Art. no.	Over base	Inlet area cm ²	Height	kg
------	----------	-----------	----------------------------	--------	----

Flat gully top for standard DIN shaft, Displacement safeguard on manhole, particularly well suited for paving, SW 16 mm

D 400	9042 612	380	220	165	22
B 125	9022 612	380	220	165	18



HOME AND YARD DRAINAGE

Class A 15 - B 125, Cast Iron (GJL), EN 124

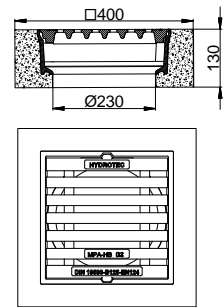
YARD GULLY TOP 400 X 400



Type	Art. no.	Over base	Inlet area cm ²	Height	kg
------	----------	-----------	----------------------------	--------	----

SW 16 mm, DIN 19593, flat

B 125	902291	400x400	220	130	50
A 15	901150	400x400	220	80	33



902291

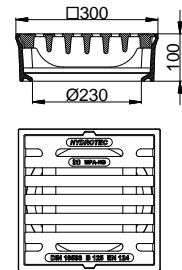
YARD GULLY TOP 300 X 300



Type	Art. no.	Over base	Inlet area cm ²	Height	kg
------	----------	-----------	----------------------------	--------	----

SW 16 mm, DIN 19593

B 125, Flat	902290	300x300	220	100	20
B 125, Concave	902270	300x300	220	100	20
A 15, Flat	901250	300x300	220	60	12



902290

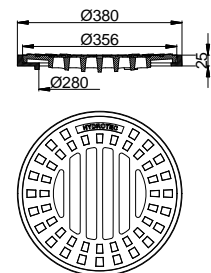
YARD GULLY TOP 300







Type	Art. no.	Over base	Inlet area cm ²	Height	kg
------	----------	-----------	----------------------------	--------	----

A 15, Concave,
Test load 50 kN

900090 380 215 25 11



ACCESSORIES

Type	Art. no.	Material		
"Universal" opening bar Opening aid for ductile manhole covers e.g. ECON, TRIX, SAFETY	989511	galv. steel		
			989511	989503
Multipurpose operating key Spider for covers and gully tops for square headed bolts M16 and M20, lift-out hook and slotted screwdriver	989503	galv. steel		
ECON SN				
Installation frame Height = 190 mm	814197			
Concrete adapter ring Height = 80 mm, inner diameter = 633 mm	814192		814197	814192

GENERAL AND TECHNICAL INFORMATION

1. Materials

We mainly use ductile cast iron or grey cast iron for manhole covers and gully tops. Grey cast iron combined with concrete is an optimum combination of materials:

- Grey cast iron and concrete have very similar material characteristics with respect to heat expansion and ductility.
- Neither material is affected by breaking elongation.
- Bending strength is improved by using concrete in the pressure area and cast iron in the traction area. This gives the user a high level of dimensional stability and long service life.

Grey cast iron

Cast iron with lamellar graphite (GG) to DIN EN 1561, EN-GJL 100 to 300. This tried and trusted material, which has been used for centuries, is still one of today's most commonly produced cast iron types. Its well-known benefits, such as more or less unlimited molding potential, pronounced stability, and excellent vibration damping make it a very attractive option compared to more expensive, premium types such as ductile graphite iron, annealed cast iron, cast steel, cast aluminum and wrought parts.

Ductile cast iron

Cast iron with nodular graphite (GGG) to DIN EN 1563, EN-GJS 400-15 to 500-7. This more recent cast iron type has far higher rigidity and expansion values than grey cast iron. However, its molding and working potential is similar to that of grey cast iron. Ductile cast iron's elasticity is far more pronounced than that of grey cast iron. Thanks to its excellent rigidity, it is suitable for parts that are subject to stress, including safety parts in the automotive industry and engine building, as well as for lightweight, thin-wall constructions.

Natural finish cast iron

Surface oxidation of cast iron (graphite / perlit formation) makes it resilient against materials that appear in traffic areas, such as de-icing salts. Scientists have demonstrated that additional surface protection is unnecessary. So don't worry about the „rusty“ surface. This is just residual iron dust from the manufacturing process which has no negative impact on the quality or function.

Dampening inserts

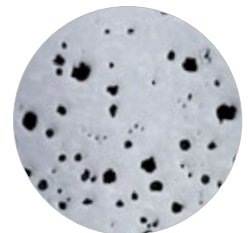
Inserts are suited between cover and frame and are wearing parts. We use different durable and high abrasion-proof inserts. **HYDROpren insert** is made of Polychlorprene according to DIN 19585. **HYDROthen insert** is based on a special abrasion proof

and durable Polyethylene. **HYDROpur insert** is made of Polyurethane which is cast around the cover and combines cover and insert inseparably – rattling is impossible.

Cast iron with lamellar graphite
Tensile strength 100-300 N/mm²
Breaking strain <1%



Cast iron with nodular graphite
Tensile strength 500-1100 N/mm²
Breaking strain 2-15%



2. Terms / Variants

Manhole covers

Manhole covers are the visible element of a manhole to the road and provide a safe cover for underground shafts.

Secured manhole covers

Owner / operators who need to prevent unauthorized opening of manhole covers should choose secured covers. We offer a variety of types for various requirements such as protection against theft and vandalism.

- **Safety screw-lock.** The covers and frames of our manhole covers with safety screw-locks are non-positively and positively locked.
- **Locking by means of turnbuckle.** The covers and frames of our manhole covers are secured with screw locks. Turnbuckles prevent unauthorized opening of covers as well as negative effect from water or air build-up.
- **Locking by means of 3 point lock** (e.g. ECON or TRIX system) 3-point locking system prevents unauthorized opening of the cover. When closed, the cover automatically locks by means of three retainers clicking into place.

Distortion protection

Distortion (Anti-Twist) protectors locating pins built into the cover with corresponding receptacles in the frame. This means the

GENERAL AND TECHNICAL INFORMATION

cover has a defined position in the frame thus preserving the contact surface quality for a considerable time.

Water tight

Surface water tight covers prevent surface water entering the manhole. Surface water tightness refers to the cover and frame. Careful installation on site and validation after completion will help ensure a tight seal between the cover and the shaft. Our guarantee only covers the tightness of the cover / frame seal.

Pressure tight

Pressure tight manhole covers provide a seal against backwater pressure. They are available for various pressure levels of 0.1 to 2.0 bar and in various types. It is important to ensure secure locking and a backwater tight seal between the shaft and the cover, this can be achieved by use of proper installation methods.

Gas tight

The definition „gas tight“ in the context of manhole covers refers to normal sewer and fecal gases. For all other gases, please contact us to check the resilience of the deployed seal.

Drainage during construction work

These gully tops have lateral openings that allow surface water to enter drainage works before the road surface has been laid.

Liftable

„Liftable“ refers to manhole covers with a smooth, vertical cast iron frame. The advantage of this frame is that it can be lifted to street level, if e.g. a new surface course is laid, using hydraulic lifting equipment. A full mounting is required for the cast iron frame after this: it is important to fill the gap between the shaft and the frame without leaving any gaps. The only frames suitable for this method are full cast iron frames which are additionally tested and approved by us for this purpose (e.g. ECON H).

Sand trap

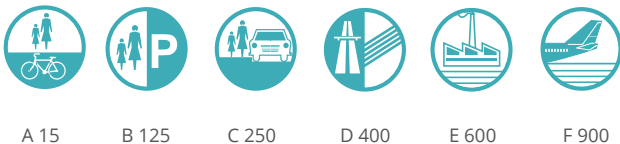
A catcher comprises of ring-shaped recess in the frame's contact surface which the lid interlocks with by means of a countererring. The channel in the cover is sealed by sand and water providing an effective seal against smells.

INSTALLATION INSTRUCTIONS

Installation, operation and maintenance instructions

Location and load class ...

The procedure for installing manhole covers and gully tops depends on the installation location, the corresponding traffic loads, and the planned surface layer. Installation locations are assigned to classes A15 through F900 in EN 124. The manhole structure must be suitable for the traffic load. The planner is responsible for choosing the correct load class.



A 15 B 125 C 250 D 400 E 600 F 900

Before Installation ...

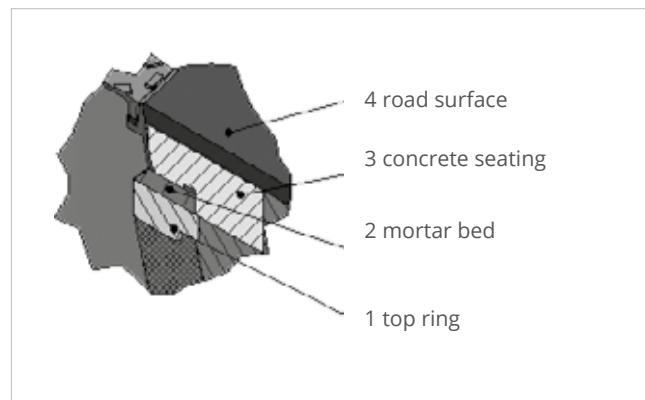
- All parts must be checked to ensure perfect working order. Never install damaged parts!
- Use suitable lifting gear for loading and offloading, and for transporting parts on site.
- Use appropriate tools for lifting out and/or inserting covers to avoid damage
- Before inserting the cover, always clean the bearing surfaces and – if it exists – check the seal for cleanliness and correct seating, and ensure that the closing device is in perfect working order and serviceable.
- Before installation clean and wet the underside of the frame.
- The civil engineering contractor is responsible for the correct installation of manhole covers!
- Observe all technical regulations.
- The planner is responsible for choosing a suitable installation method, mortar quality and the manhole cover position with respect to driving direction.
-

Installation ...

- The frame must always be in full contact with the mortar bed and capable of bearing. If the substructure is not executed correctly, subsequent traffic load will cause loosening, premature wear, rattling, or even destruction of the cover.
- Prepare the mortar bed (min. MG III, DIN 1053), install the frame with full contact and align at the correct height.
- When installing thin-walled frames which are not torsion-free make sure the cover is fitted when installing the frame.
- For ECON H frames watch out for mortar penetrating the holes in the frame bearing surface.
- When adjusting the cover height by more than 40mm the

- use of concrete retaining rings, spacer segments, or non-shrink, quick setting grout with plastic additive is recommended.
- In case of subsequent height adjustments always execute a new mortar bed throughout.
- Clean the cover and frame contact surfaces.
- Fit the cover and check for noise-free seating.

- 1 Clean and dampen the contact surfaces
- 2 Set the frame fully in a 20-40 mm mortar bed
- 3 Encase the frame in concrete (min. C20 / 25) and compact
- 4 Lay road surface (30-40 mm)



Attention!

In case of subsequent height adjustments always execute a new mortar bed throughout. Clean the contact surfaces of the frame and cover before fitting and thoroughly clean the hinge recess.

Mortar specification:

Crushing strength min. 10 N / mm² / Mortar group III to DIN 1053. We recommend quick-setting mortar and the use of formwork. Do not subject the cover to load until the mortar has set (see manufacturer's instructions).

INSTALLATION INSTRUCTIONS

Handling and maintenance

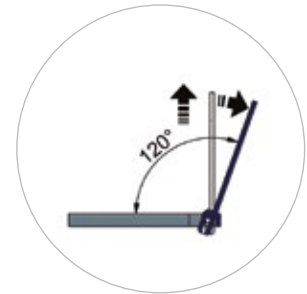
Manhole covers with spring locking and hinges e.g. ECON / TRIX ...

The covers are opened by means of a lift-out bar which is inserted into the recess between the frame and the cover, and unlocked by lifting force.

The manhole cover is secured against accidental closing at 90°. The cover is removable in 90° position. To close the cover lift the cover slightly in 90° position and allow it drop. Check all seals and inserts for damage before closing and replace if needed. Check hinges for soiling and clean if needed, before closing the cover.



Unlock Cover

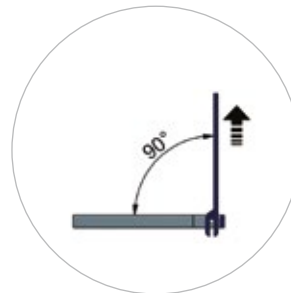


Inspection Cover

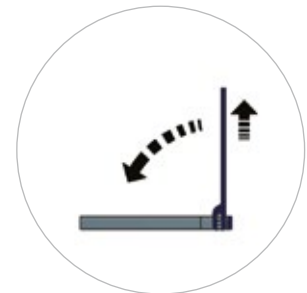
Pressure-tight – and watertight manhole covers ...

Covers secured by screw locks should be inspected once a year. Should you need to open the manhole covers, follow these steps:

- Clean the bearing surfaces
- Clean the drill holes in the cover
- Check the insert for damage and replace if needed
- After cleaning apply, protective spray to the insert (silicon)
- Insert the cover. Make sure that it is fully seated and flush (screw connection) in the frame.
- Before inserting the screws, check the self-locking DUBO washers for damage and replace if needed.
- Tighten screws cross-wise (wheel nut principle) and evenly using a torque wrench at a tightening torque of 120 – 150 Nm (turn-buckle max. 80 Nm.)
- We recommend additionally securing the screws with screw locking fluid.



Remove Cover



Close

Self-levelling manhole covers e.g. ECON SN / SCANDIC SN ...

Please observe our separate installation instructions for floating, self-levelling manhole covers.



Manhole Cover - spring locking and hinges



Manhole Cover - pressure-tight and watertight



Manhole Cover - self-levelling (SN)

GUARANTEED QUALITY

For our products we assume an extended warranty of up to 5 million EURO.

HYDROTEC
WARRANTY

The HYDROTEC Technologies AG is certified in ISO 9001:2015 by TÜV Cert. Our quality controlled road sewer castings and trench drainage are quality products that are produced according to the state of the art. External monitoring is carried out by the Official Material Testing Institute in Bremen (MPA). The MPA Bremen is a testing laboratory accredited by the DAAM (German Accreditation Body) according to DIN EN ISO/IEC 17025.

We assume for the systems listed in this high-quality products an extended warranty or liability:

- For a period of 2 years commencing from the date of manufacture, we guarantee all defects attribute to us.
This warranty includes:
Free repair or free replacement of the parts necessary to remedy the defect, free delivery to the place of use, plus all necessary removal and installation costs.
Compensation for personal injury and/or damage to property as well as consequential losses resulting from such injury and/or damage up to sum of EUR 5.000.000,- (in words: five million EURO) Insurance cover is provided by ALLIANZ.
- The warranty applies under the following conditions:
The product must have been used according to its purpose, properly installed and maintained. Notification of a defect or loss must be given without delay. We must be allowed an opportunity to examine the product and review the circumstances of the damaging event.
- The warranty does not apply to wear and tear.

Wiesbaden, March 2021
Uwe Brinkmann
CEO

HYDROTEC Technologies AG | Daviggerger Straße 46 | D-27713 Wiesbaden / Germany
www.hydrotec.com

N. BSB
kiwa

Certificaat

Hydriol Technologies AG

Bestuurder: **Bestuurder**

General notes

Illustrations, dimensions and weights are provided without commitment. We reserve the right to modify the design and production methods to reflect the current state of art in technology. All previous catalogues become invalid on publication of this catalogue. All details concerning standards and kite marks were correct when this catalogue went to press.

ÖSTERREICHISCHES NORMENINSTITUT (ÖN)

ZERTIFIKAT
Nr. 0014/2002-142
für ein Bauteil
KONFORMITÄTSCERTIFIZIERUNG

Rahmen für Abdeckungen vom Schächten in Verkehrsflächen Modell ECON-Plus
aus Gussblech (Diplomwerk), rund mit 3-Punkt-Abstützung, L x W 400 mm, Rahmenhöhe 100 mm, Klasse B 400
unter der Zulassung Nr. 01-00384 der HYDROTEC Technologies GmbH & Co. KG
hergestellt im Werk A 1
mit den Bestimmungen der ÖNORMEN EN 124 und B 5116.

Die Firma
HYDROTEC Technologies GmbH & Co. KG
Daviggerger Straße 46, D-27713 WIESBADEN
hat diesen Sachverhalt, diese Produkte mit dem Konformitätszeichen
ÖN CERT
unter Angabe der ÖNORMEN EN 124 und B 5116
gemäß der Klasse B 400
als Konformitätszeichen
Produkt und Konformitätszeichen
Brennweite: Hersteller und Fertigungsdatum: 17. 6. 2021
Datei: 17. 6. 2021

Technische Maßstab-Prüfanstalt
Prüfungsbüro für Bauteile und Bauelemente

ZERTIFIKAT

Hydrotec Technologies AG
Daviggerger Straße 46
27713 Wiesbaden

Konformitätsbescheinigung für
Produkte der Firma
Hydrotec Technologies AG
Daviggerger Straße 46
27713 Wiesbaden

Prüfungsbüro für Bauteile und Bauelemente
Technische Maßstab-Prüfanstalt
Prüfungsbüro für Bauteile und Bauelemente
Prüfungsbüro für Bauteile und Bauelemente

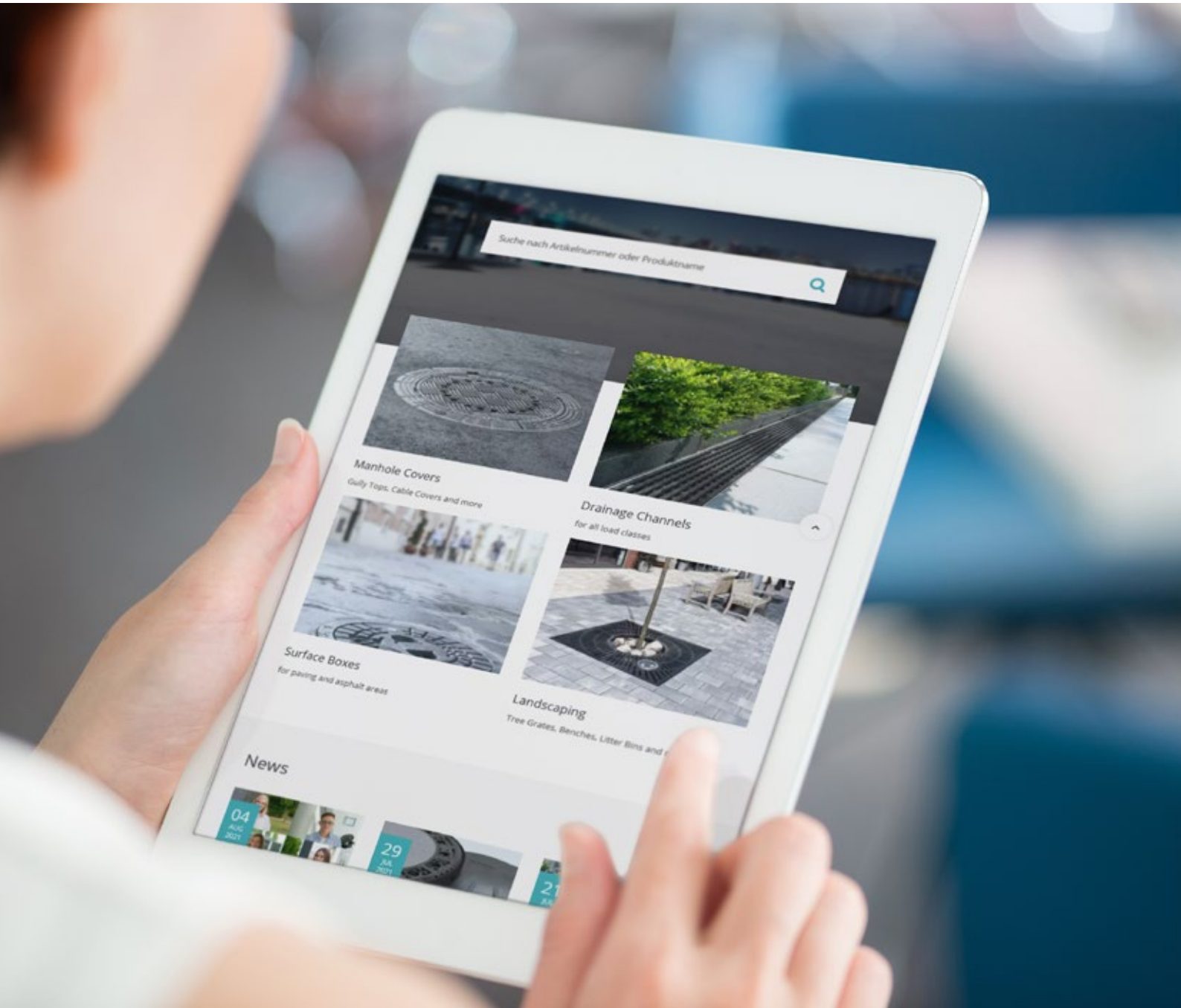
DAP Deutsches Akkreditierungssystem Prüfwesen GmbH
represented in the
Deutschen Akkreditierungsrat
Accreditation

The DAP Deutsches Akkreditierungssystem Prüfwesen GmbH herewith confirms that the
Analytische Materialprüfanstalt der
Firma Hans-Joachim
Paul-Faber Straße 1
27713 Bremen

is competent under the terms of DIN EN ISO 9001:2015 / ISO 9001:2015 for issuing and testing the following:
mechanical-technological investigations of metals;
specific chemical and physical investigations of concrete, cement and
sewerage systems/drainage systems;
analysis for fibrous particles in air and dust;
determination of microbiological content in air as well as investigations of
effects of microorganisms on plastics

for the test methods listed in the annex.
The laboratory has proved for its testing activities that it operates a quality system which also
complies with the requirements of DIN EN ISO 9001:2015.
The accreditation is valid from 10-10-2001 to 09-10-2006.
DAF registration number: **DAP-PL-0011-00**
Berlin, 10-10-2001

OTHER HYDROTEC PRODUCT AREAS



www.hydrotec.com




HYDROTEC Technologies AG
Düngstruper Straße 46
27793 Wildeshausen
Germany

 export@hydrotec.com

 +49 4431 9355-0

 www.hydrotec.com

 +49 4431 9355-22